

## ARG41726 anti-SCG3 / Secretogranin 3 antibody

Package: 50 µg  
Store at: -20°C

### Summary

Product Description	Rabbit Polyclonal antibody recognizes SCG3 / Secretogranin 3
Tested Reactivity	Hu, Ms, Rat
Predict Reactivity	Bov
Tested Application	IHC-P, WB
Host	Rabbit
Clonality	Polyclonal
Isotype	IgG
Target Name	SCG3 / Secretogranin 3
Species	Human
Immunogen	Synthetic peptide corresponding to aa. 438-450 of Human Secretogranin 3. (DFINKQADAYVEK)
Conjugation	Un-conjugated
Alternate Names	SgIII; Secretogranin III; SGIII; Secretogranin-3

### Application Instructions

Application table	Application	Dilution
	IHC-P	1:200 - 1:1000
	WB	1:500 - 1:2000
Application Note	* The dilutions indicate recommended starting dilutions and the optimal dilutions or concentrations should be determined by the scientist.	
Observed Size	~ 53 kDa	

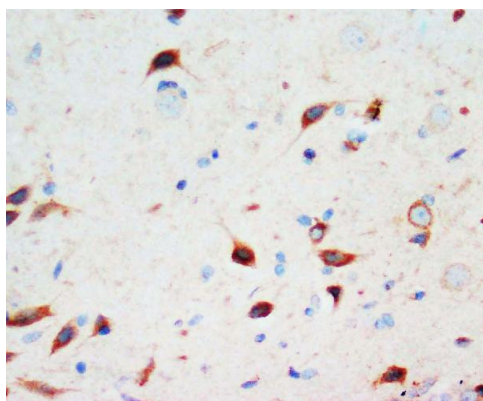
### Properties

Form	Liquid
Purification	Affinity purification with immunogen.
Buffer	0.2% Na <sub>2</sub> HPO <sub>4</sub> , 0.9% NaCl, 0.05% Thimerosal, 0.05% Sodium azide and 5% BSA.
Preservative	0.05% Thimerosal and 0.05% Sodium azide
Stabilizer	5% BSA
Concentration	0.5 mg/ml
Storage instruction	For continuous use, store undiluted antibody at 2-8°C for up to a week. For long-term storage, aliquot and store at -20°C or below. Storage in frost free freezers is not recommended. Avoid repeated freeze/thaw cycles. Suggest spin the vial prior to opening. The antibody solution should be gently mixed before use.

## Bioinformation

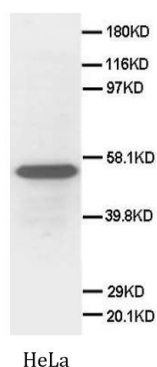
Gene Symbol	SCG3
Gene Full Name	secretogranin III
Background	The protein encoded by this gene is a member of the chromogranin/secretogranin family of neuroendocrine secretory proteins. Granins may serve as precursors for biologically active peptides. Some granins have been shown to function as helper proteins in sorting and proteolytic processing of prohormones; however, the function of this protein is unknown. Two transcript variants encoding different isoforms have been found for this gene. [provided by RefSeq, Sep 2009]
Calculated Mw	53 kDa
PTM	O-glycosylated. [UniProt]
Cellular Localization	Cytoplasmic vesicle, secretory vesicle lumen. Cytoplasmic vesicle, secretory vesicle membrane; Peripheral membrane protein. Secreted. Note=Associated with the secretory granule membrane through direct binding to cholesterol-enriched lipid rafts in intragranular conditions (By similarity). Neuroendocrine and endocrine secretory granules. [UniProt]

## Images



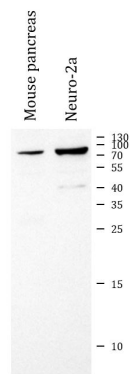
ARG41726 anti-SCG3 / Secretogranin 3 antibody IHC-P image

Immunohistochemistry: Paraffin-embedded Rat brain tissue stained with ARG41726 anti-SCG3 / Secretogranin 3 antibody.



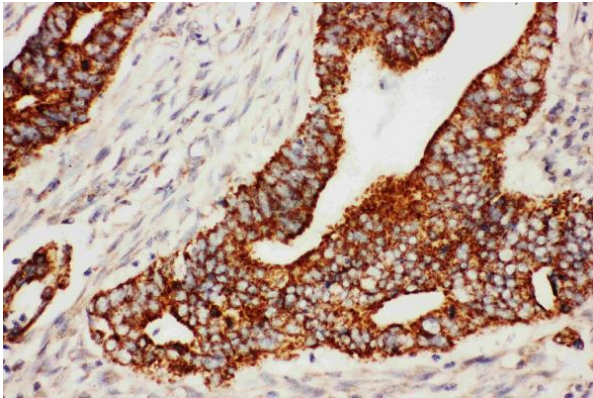
ARG41726 anti-SCG3 / Secretogranin 3 antibody WB image

Western blot: HeLa cell lysate stained with ARG41726 anti-SCG3 / Secretogranin 3 antibody.



ARG41726 anti-SCG3 / Secretogranin 3 antibody WB image

Western blot: 50 µg of sample under reducing conditions. Mouse pancreas and Neuro-2a whole cell lysates stained with ARG41726 anti-SCG3 / Secretogranin 3 antibody at 0.5 µg/ml dilution, overnight at 4°C.



ARG41726 anti-SCG3 / Secretogranin 3 antibody IHC-P image

Immunohistochemistry: Paraffin-embedded Human rectal cancer tissue stained with ARG41726 anti-SCG3 / Secretogranin 3 antibody.