

**ARG41741**  
**anti-UNC93B1 antibody**Package: 100 µl  
Store at: -20°C

### Summary

Product Description	Rabbit Polyclonal antibody recognizes UNC93B1
Tested Reactivity	Hu, Ms, Rat
Tested Application	WB
Host	Rabbit
Clonality	Polyclonal
Isotype	IgG
Target Name	UNC93B1
Species	Human
Immunogen	Synthetic peptide within aa. 450-550 of Human UNC93B1 (NP_112192.2).
Conjugation	Un-conjugated
Alternate Names	Unc-93B1; Protein unc-93 homolog B1; UNC93; IIAE1; UNC93B; hUNC93B1

### Application Instructions

Application table	Application	Dilution
	WB	1:500 - 1:2000
Application Note	* The dilutions indicate recommended starting dilutions and the optimal dilutions or concentrations should be determined by the scientist.	
Positive Control	HeLa	
Observed Size	~ 70 kDa	

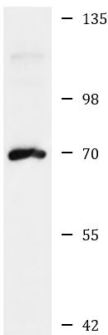
### Properties

Form	Liquid
Purification	Affinity purified.
Buffer	PBS (pH 7.3), 0.02% Sodium azide and 50% Glycerol.
Preservative	0.02% Sodium azide
Stabilizer	50% Glycerol
Storage instruction	For continuous use, store undiluted antibody at 2-8°C for up to a week. For long-term storage, aliquot and store at -20°C. Storage in frost free freezers is not recommended. Avoid repeated freeze/thaw cycles. Suggest spin the vial prior to opening. The antibody solution should be gently mixed before use.
Note	For laboratory research only, not for drug, diagnostic or other use.

Bioinformation

Gene Symbol	UNC93B1
Gene Full Name	unc-93 homolog B1 (C. elegans)
Background	This gene encodes a protein that is involved in innate and adaptive immune response by regulating toll-like receptor signaling. The encoded protein traffics nucleotide sensing toll-like receptors to the endolysosome from the endoplasmic reticulum. Deficiency of the encoded protein has been associated with herpes simplex encephalitis. [provided by RefSeq, Feb 2014]
Function	Plays an important role in innate and adaptive immunity by regulating nucleotide-sensing Toll-like receptor (TLR) signaling. Required for the transport of a subset of TLRs (including TLR3, TLR7 and TLR9) from the endoplasmic reticulum to endolysosomes where they can engage pathogen nucleotides and activate signaling cascades. May play a role in autoreactive B-cells removal. [UniProt]
Calculated Mw	67 kDa
PTM	N-glycosylated. [UniProt]
Cellular Localization	Endoplasmic reticulum membrane; Multi-pass membrane protein. Endosome. Lysosome. Cytoplasmic vesicle, phagosome. Note=Relocalizes from endoplasmic reticulum to endosome and lysosome upon cell-stimulation with CpG dinucleotides (By similarity). Colocalizes with LAMP5 in large endosomal intracellular vesicles. [UniProt]

Images



HeLa

ARG41741 anti-UNC93B1 antibody WB image

Western blot: 25 µg of HeLa cell lysate stained with ARG41741 anti-UNC93B1 antibody at 1:1000 dilution.