

## ARG41793 anti-MAD2L1BP / CMT2 antibody

Package: 100 µl  
Store at: -20°C

### Summary

Product Description	Rabbit Polyclonal antibody recognizes MAD2L1BP / CMT2
Tested Reactivity	Hu, Ms, Rat
Tested Application	ICC/IF, IHC-P, WB
Host	Rabbit
Clonality	Polyclonal
Isotype	IgG
Target Name	MAD2L1BP / CMT2
Species	Human
Immunogen	Synthetic peptide of Human MAD2L1BP / CMT2.
Conjugation	Un-conjugated
Alternate Names	MAD2L1-binding protein; Caught by MAD2 protein; CMT2

### Application Instructions

Application table	Application	Dilution
	ICC/IF	1:50 - 1:200
	IHC-P	1:50 - 1:200
	WB	1:500 - 1:2000
Application Note	* The dilutions indicate recommended starting dilutions and the optimal dilutions or concentrations should be determined by the scientist.	
Positive Control	A431	
Observed Size	~ 32 kDa	

### Properties

Form	Liquid
Purification	Affinity purified.
Buffer	PBS (pH 7.4), 150 mM NaCl, 0.02% Sodium azide and 50% Glycerol.
Preservative	0.02% Sodium azide
Stabilizer	50% Glycerol
Storage instruction	For continuous use, store undiluted antibody at 2-8°C for up to a week. For long-term storage, aliquot and store at -20°C. Storage in frost free freezers is not recommended. Avoid repeated freeze/thaw cycles. Suggest spin the vial prior to opening. The antibody solution should be gently mixed before use.

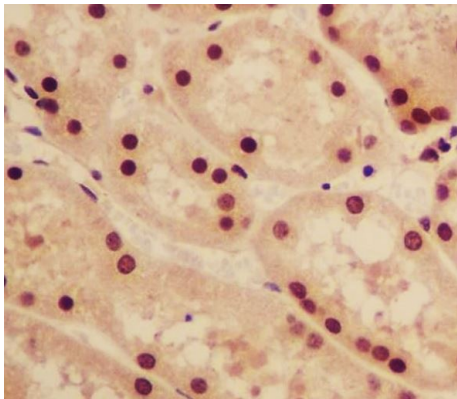
Note

For laboratory research only, not for drug, diagnostic or other use.

Bioinformation

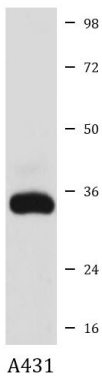
Gene Symbol	MAD2L1BP
Gene Full Name	MAD2L1 binding protein
Background	The protein encoded by this gene was identified as a binding protein of the MAD2 mitotic arrest deficient-like 1 (MAD2/MAD2L1). MAD2 is a key component of the spindle checkpoint that delays the onset of anaphase until all the kinetochores are attached to the spindle. This protein may interact with the spindle checkpoint and coordinate cell cycle events in late mitosis. Alternatively spliced transcript variants encoding distinct isoforms have been observed. [provided by RefSeq, Jul 2008]
Function	May function to silence the spindle checkpoint and allow mitosis to proceed through anaphase by binding MAD2L1 after it has become dissociated from the MAD2L1-CDC20 complex. [UniProt]
Calculated Mw	31 kDa
Cellular Localization	Nucleus. Cytoplasm, cytoskeleton, spindle. Note=During early mitosis, unevenly distributed throughout the nucleoplasm. From metaphase to anaphase, concentrated on the spindle. [UniProt]

Images



ARG41793 anti-MAD2L1BP / CMT2 antibody IHC-P image

Immunohistochemistry: Paraffin-embedded Human kidney tissue stained with ARG41793 anti-MAD2L1BP / CMT2 antibody.



ARG41793 anti-MAD2L1BP / CMT2 antibody WB image

Western blot: A431 cell lysate stained with ARG41793 anti-MAD2L1BP / CMT2 antibody.