

ARG41806 anti-PAX8 antibody

Package: 100 µl
Store at: -20°C

Summary

| | |
|---------------------|--|
| Product Description | Rabbit Polyclonal antibody recognizes PAX8 |
| Tested Reactivity | Hu |
| Tested Application | ICC/IF, IHC-P, WB |
| Host | Rabbit |
| Clonality | Polyclonal |
| Isotype | IgG |
| Target Name | PAX8 |
| Species | Human |
| Immunogen | Synthetic peptide of Human PAX8. |
| Conjugation | Un-conjugated |
| Alternate Names | Paired box protein Pax-8 |

Application Instructions

| Application table | Application | Dilution |
|-------------------|--|----------------|
| | ICC/IF | 1:50 - 1:200 |
| | IHC-P | 1:50 - 1:200 |
| | WB | 1:500 - 1:2000 |
| Application Note | * The dilutions indicate recommended starting dilutions and the optimal dilutions or concentrations should be determined by the scientist. | |
| Positive Control | SKOV3 | |
| Observed Size | ~ 48 kDa | |

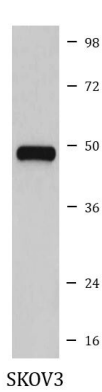
Properties

| | |
|---------------------|---|
| Form | Liquid |
| Purification | Affinity purified. |
| Buffer | PBS (pH 7.4), 150 mM NaCl, 0.02% Sodium azide and 50% Glycerol. |
| Preservative | 0.02% Sodium azide |
| Stabilizer | 50% Glycerol |
| Storage instruction | For continuous use, store undiluted antibody at 2-8°C for up to a week. For long-term storage, aliquot and store at -20°C. Storage in frost free freezers is not recommended. Avoid repeated freeze/thaw cycles. Suggest spin the vial prior to opening. The antibody solution should be gently mixed before use. |

Bioinformation

| | |
|-----------------------|---|
| Gene Symbol | PAX8 |
| Gene Full Name | paired box 8 |
| Background | This gene encodes a member of the paired box (PAX) family of transcription factors. Members of this gene family typically encode proteins that contain a paired box domain, an octapeptide, and a paired-type homeodomain. This nuclear protein is involved in thyroid follicular cell development and expression of thyroid-specific genes. Mutations in this gene have been associated with thyroid dysgenesis, thyroid follicular carcinomas and atypical follicular thyroid adenomas. Alternatively spliced transcript variants encoding different isoforms have been described. [provided by RefSeq, Mar 2010] |
| Function | Transcription factor for the thyroid-specific expression of the genes exclusively expressed in the thyroid cell type, maintaining the functional differentiation of such cells. [UniProt] |
| Calculated Mw | 48 kDa |
| Cellular Localization | Nucleus. [UniProt] |

Images



ARG41806 anti-PAX8 antibody WB image

Western blot: SKOV3 cell lysate stained with ARG41806 anti-PAX8 antibody.