

ARG41807 anti-SUZ12 antibody

Package: 100 µl
Store at: -20°C

Summary

Product Description	Rabbit Polyclonal antibody recognizes SUZ12
Tested Reactivity	Hu, Ms, Rat
Tested Application	FACS, ICC/IF, IP, WB
Host	Rabbit
Clonality	Polyclonal
Isotype	IgG
Target Name	SUZ12
Species	Human
Immunogen	Synthetic peptide of Human SUZ12.
Conjugation	Un-conjugated
Alternate Names	Polycomb protein SUZ12; Chromatin precipitated E2F target 9 protein; ChET 9 protein; CHET9; Joined to JAZF1 protein; JJA21; Suppressor of zeste 12 protein homolog

Application Instructions

Application table	Application	Dilution
	FACS	Assay-dependent
	ICC/IF	1:50 - 1:200
	IP	1:50
	WB	1:500 - 1:2000
Application Note	* The dilutions indicate recommended starting dilutions and the optimal dilutions or concentrations should be determined by the scientist.	
Positive Control	SW480	
Observed Size	~ 87 kDa	

Properties

Form	Liquid
Purification	Affinity purified.
Buffer	PBS (pH 7.4), 150 mM NaCl, 0.02% Sodium azide and 50% Glycerol.
Preservative	0.02% Sodium azide
Stabilizer	50% Glycerol
Storage instruction	For continuous use, store undiluted antibody at 2-8°C for up to a week. For long-term storage, aliquot and store at -20°C. Storage in frost free freezers is not recommended. Avoid repeated freeze/thaw

cycles. Suggest spin the vial prior to opening. The antibody solution should be gently mixed before use.

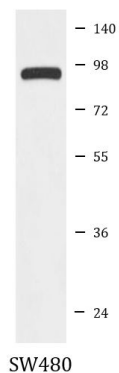
Note

For laboratory research only, not for drug, diagnostic or other use.

Bioinformation

Gene Symbol	SUZ12
Gene Full Name	SUZ12 polycomb repressive complex 2 subunit
Background	This zinc finger gene has been identified at the breakpoints of a recurrent chromosomal translocation reported in endometrial stromal sarcoma. Recombination of these breakpoints results in the fusion of this gene and JAZF1. The protein encoded by this gene contains a zinc finger domain in the C terminus of the coding region. [provided by RefSeq, Jul 2009]
Function	Polycomb group (PcG) protein. Component of the PRC2/EED-EZH2 complex, which methylates 'Lys-9' (H3K9me) and 'Lys-27' (H3K27me) of histone H3, leading to transcriptional repression of the affected target gene. The PRC2/EED-EZH2 complex may also serve as a recruiting platform for DNA methyltransferases, thereby linking two epigenetic repression systems. Genes repressed by the PRC2/EED-EZH2 complex include HOXC8, HOXA9, MYT1 and CDKN2A. [UniProt]
Calculated Mw	83 kDa
PTM	Sumoylated, probably by PIAS2. [UniProt]
Cellular Localization	Nucleus. [UniProt]

Images



ARG41807 anti-SUZ12 antibody WB image

Western blot: SW480 cell lysate stained with ARG41807 anti-SUZ12 antibody.