

ARG41891 anti-CD66a / CEACAM1 antibody

Package: 100 µl
Store at: -20°C

Summary

Product Description	Rabbit Polyclonal antibody recognizes CD66a / CEACAM1
Tested Reactivity	Hu
Tested Application	IHC-P, IP, WB
Host	Rabbit
Clonality	Polyclonal
Isotype	IgG
Target Name	CD66a / CEACAM1
Species	Human
Immunogen	Synthetic peptide within the last 30 amino acids of Human CD66a / CEACAM1. (Isoform 1: P13688-1)
Conjugation	Un-conjugated
Alternate Names	Carcinoembryonic antigen-related cell adhesion molecule 1; BGP-1; BGP1; Biliary glycoprotein 1; BGP; BGPI; CD antigen CD66a

Application Instructions

Application table	Application	Dilution
	IHC-P	1:50 - 1:200
	IP	1:50
	WB	1:1000 - 1:5000
Application Note	* The dilutions indicate recommended starting dilutions and the optimal dilutions or concentrations should be determined by the scientist.	
Positive Control	SW480	

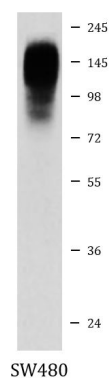
Properties

Form	Liquid
Purification	Affinity purified.
Buffer	PBS (pH 7.4), 150 mM NaCl, 0.02% Sodium azide and 50% Glycerol.
Preservative	0.02% Sodium azide
Stabilizer	50% Glycerol
Storage instruction	For continuous use, store undiluted antibody at 2-8°C for up to a week. For long-term storage, aliquot and store at -20°C. Storage in frost free freezers is not recommended. Avoid repeated freeze/thaw cycles. Suggest spin the vial prior to opening. The antibody solution should be gently mixed before use.
Note	For laboratory research only, not for drug, diagnostic or other use.

Bioinformation

Gene Symbol	CEACAM1
Gene Full Name	carcinoembryonic antigen-related cell adhesion molecule 1 (biliary glycoprotein)
Background	<p>This gene encodes a member of the carcinoembryonic antigen (CEA) gene family, which belongs to the immunoglobulin superfamily. Two subgroups of the CEA family, the CEA cell adhesion molecules and the pregnancy-specific glycoproteins, are located within a 1.2 Mb cluster on the long arm of chromosome 19. Eleven pseudogenes of the CEA cell adhesion molecule subgroup are also found in the cluster. The encoded protein was originally described in bile ducts of liver as biliary glycoprotein. Subsequently, it was found to be a cell-cell adhesion molecule detected on leukocytes, epithelia, and endothelia. The encoded protein mediates cell adhesion via homophilic as well as heterophilic binding to other proteins of the subgroup. Multiple cellular activities have been attributed to the encoded protein, including roles in the differentiation and arrangement of tissue three-dimensional structure, angiogenesis, apoptosis, tumor suppression, metastasis, and the modulation of innate and adaptive immune responses. Multiple transcript variants encoding different isoforms have been reported, but the full-length nature of all variants has not been defined. [provided by RefSeq, May 2010]</p>
Calculated Mw	58 kDa
PTM	<p>Isoform 1: Phosphorylated on serine and tyrosine (By similarity). Isoform 1 is phosphorylated on tyrosine by Src family kinases like SRC and LCK and by receptor like CSF3R, EGFR and INSR upon stimulation (PubMed:15467833, PubMed:18424730, PubMed:7478590). Phosphorylated at Ser-508; mediates activity. Phosphorylated at Tyr-493; regulates activity (By similarity). Phosphorylated at Tyr-493 by EGFR and INSR upon stimulation; this phosphorylation is Ser-508-phosphorylation-dependent; mediates cellular internalization; increases interaction with downstream proteins like SHC1 and FASN (By similarity). Phosphorylated at Tyr-493 and Tyr-520 by LCK; mediates PTPN6 association and is regulated by homophilic ligation of CEACAM1 in the absence of T cell activation (PubMed:18424730). Phosphorylated at Tyr-520; mediates interaction with PTPN11 (By similarity).</p> <p>Isoform 8: Phosphorylated on serine and threonine. [UniProt]</p>
Cellular Localization	<p>Isoform 1: Cell membrane. Lateral cell membrane. Apical cell membrane. Basal cell membrane. Cell junction. Isoform 2, 3 and 4: Secreted. Isoform 5, 6 and 7: Cell membrane. Isoform 8: Cell membrane. Cytoplasmic vesicle, secretory vesicle membrane. Lateral cell membrane. Apical cell membrane. Basal cell membrane. Cell junction. [UniProt]</p>

Images



ARG41891 anti-CD66a / CEACAM1 antibody WB image

Western blot: SW480 cell lysate stained with ARG41891 anti-CD66a / CEACAM1 antibody.