

## ARG41902 anti-Hepatocyte / Hep Par-1 antibody [HepPar1]

Package: 50 µg  
Store at: -20°C

### Summary

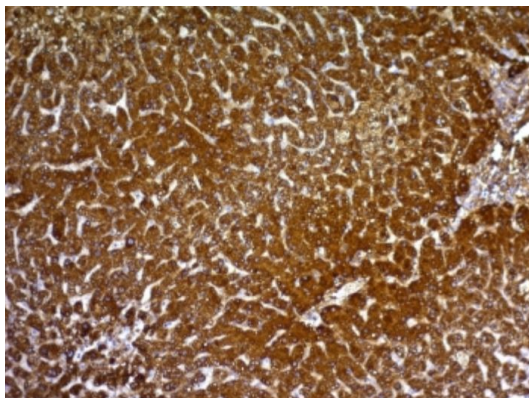
Product Description	Mouse Monoclonal antibody [HepPar1] recognizes Hepatocyte / Hep Par-1
Tested Reactivity	Hu
Tested Application	ICC/IF, IHC-P
Host	Mouse
Clonality	Monoclonal
Clone	HepPar1
Isotype	IgG1, kappa
Target Name	Hepatocyte / Hep Par-1
Species	Human
Immunogen	Extract of a formalin-fixed, rejected-allograft of a Human liver.
Conjugation	Un-conjugated

### Application Instructions

Application table	Application	Dilution
	ICC/IF	0.5 - 1 µg/ml
	IHC-P	0.25 - 0.5 µg/ml
Application Note	* The dilutions indicate recommended starting dilutions and the optimal dilutions or concentrations should be determined by the scientist.	

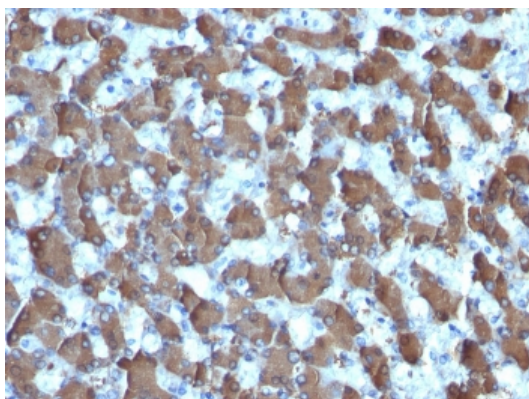
### Properties

Form	Liquid
Purification	Purification with Protein G.
Buffer	PBS, 0.05% Sodium azide and 0.1 mg/ml BSA.
Preservative	0.05% Sodium azide
Stabilizer	0.1 mg/ml BSA
Concentration	0.2 mg/ml
Storage instruction	For continuous use, store undiluted antibody at 2-8°C for up to a week. For long-term storage, aliquot and store at -20°C or below. Storage in frost free freezers is not recommended. Avoid repeated freeze/thaw cycles. Suggest spin the vial prior to opening. The antibody solution should be gently mixed before use.
Note	For laboratory research only, not for drug, diagnostic or other use.



ARG41902 anti-Hepatocyte / Hep Par-1 antibody [HepPar1] IHC-P image

Immunohistochemistry: Formalin-fixed and paraffin-embedded Human hepatocellular carcinoma stained with ARG41902 anti-Hepatocyte / Hep Par-1 antibody [HepPar1].



ARG41902 anti-Hepatocyte / Hep Par-1 antibody [HepPar1] IHC-P image

Immunohistochemistry: Formalin-fixed and paraffin-embedded Human liver tissue stained with ARG41902 anti-Hepatocyte / Hep Par-1 antibody [HepPar1].