

## ARG41903 anti-EEA1 antibody

Package: 50 µl  
Store at: -20°C

### Summary

Product Description	Rabbit Polyclonal antibody recognizes EEA1
Tested Reactivity	Hu, Ms
Tested Application	WB
Host	Rabbit
Clonality	Polyclonal
Isotype	IgG
Target Name	EEA1
Species	Human
Immunogen	Synthetic peptide of Human EEA1.
Conjugation	Un-conjugated
Alternate Names	Early endosome antigen 1; Zinc finger FYVE domain-containing protein 2; MST105; MSTP105; ZFYVE2; Endosome-associated protein p162

### Application Instructions

Application table	Application	Dilution
	WB	1:500 - 1:2000
Application Note	* The dilutions indicate recommended starting dilutions and the optimal dilutions or concentrations should be determined by the scientist.	
Observed Size	~ 170 kDa	

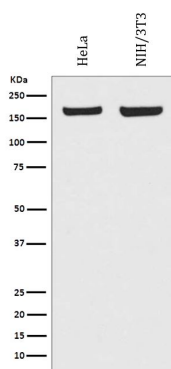
### Properties

Form	Liquid
Purification	Affinity purified.
Buffer	PBS (pH 7.4), 150 mM NaCl, 0.02% Sodium azide and 50% Glycerol.
Preservative	0.02% Sodium azide
Stabilizer	50% Glycerol
Concentration	0.5 mg/ml
Storage instruction	For continuous use, store undiluted antibody at 2-8°C for up to a week. For long-term storage, aliquot and store at -20°C. Storage in frost free freezers is not recommended. Avoid repeated freeze/thaw cycles. Suggest spin the vial prior to opening. The antibody solution should be gently mixed before use.
Note	For laboratory research only, not for drug, diagnostic or other use.

## Bioinformation

Gene Symbol	EEA1
Gene Full Name	early endosome antigen 1
Function	Binds phospholipid vesicles containing phosphatidylinositol 3-phosphate and participates in endosomal trafficking. [UniProt]
Calculated Mw	162 kDa
Cellular Localization	Cytoplasm. Early endosome membrane; Peripheral membrane protein. [UniProt]

## Images



ARG41903 anti-EEA1 antibody WB image

Western blot: 50 µg of samples under reducing conditions. HeLa and NIH/3T3 cell lysates stained with ARG41903 anti-EEA1 antibody, overnight at 4°C.