

ARG41931 anti-CD90 / Thy 1 antibody

Package: 100 µl
Store at: -20°C

Summary

Product Description	Rabbit Polyclonal antibody recognizes CD90 / Thy 1
Tested Reactivity	Hu
Tested Application	ICC/IF, IHC-P, WB
Host	Rabbit
Clonality	Polyclonal
Isotype	IgG
Target Name	CD90 / Thy 1
Species	Human
Immunogen	Synthetic peptide of Human CD90 / Thy 1.
Conjugation	Un-conjugated
Alternate Names	Thy-1 membrane glycoprotein; Thy-1 antigen; CD antigen CD90; CDw90; CD90

Application Instructions

Application table	Application	Dilution
	ICC/IF	1:50 - 1:200
	IHC-P	1:50 - 1:200
	WB	1:500 - 1:2000
Application Note	* The dilutions indicate recommended starting dilutions and the optimal dilutions or concentrations should be determined by the scientist.	
Positive Control	Human fetal brain	
Observed Size	~ 28 kDa	

Properties

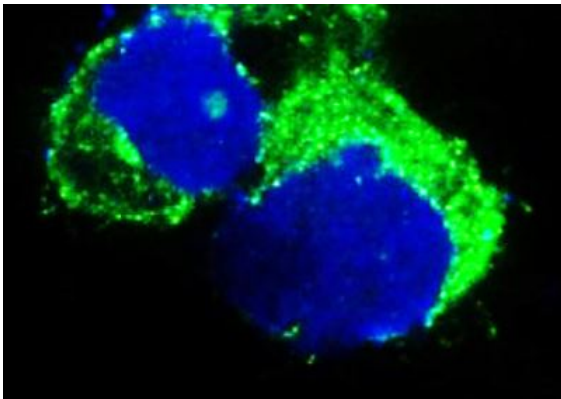
Form	Liquid
Purification	Affinity purified.
Buffer	PBS (pH 7.4), 150 mM NaCl, 0.02% Sodium azide and 50% Glycerol.
Preservative	0.02% Sodium azide
Stabilizer	50% Glycerol
Storage instruction	For continuous use, store undiluted antibody at 2-8°C for up to a week. For long-term storage, aliquot and store at -20°C. Storage in frost free freezers is not recommended. Avoid repeated freeze/thaw cycles. Suggest spin the vial prior to opening. The antibody solution should be gently mixed before use.

Note For laboratory research only, not for drug, diagnostic or other use.

Bioinformation

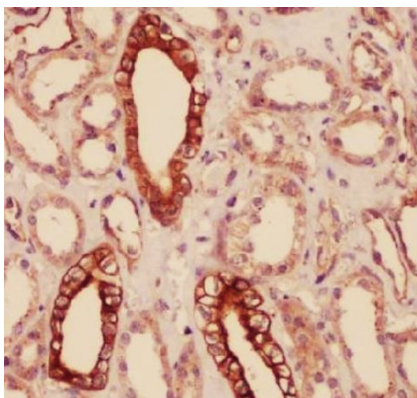
Gene Symbol	THY1
Gene Full Name	Thy-1 cell surface antigen
Background	This gene encodes a cell surface glycoprotein and member of the immunoglobulin superfamily of proteins. The encoded protein is involved in cell adhesion and cell communication in numerous cell types, but particularly in cells of the immune and nervous systems. The encoded protein is widely used as a marker for hematopoietic stem cells. This gene may function as a tumor suppressor in nasopharyngeal carcinoma. Alternative splicing results in multiple transcript variants. [provided by RefSeq, Jul 2015]
Function	May play a role in cell-cell or cell-ligand interactions during synaptogenesis and other events in the brain. [UniProt]
Calculated Mw	18 kDa
Cellular Localization	Cell membrane; Lipid-anchor, GPI-anchor. [UniProt]

Images



ARG41931 anti-CD90 / Thy 1 antibody ICC/IF image

Immunofluorescence: U87-MG cells stained with ARG41931 anti-CD90 / Thy 1 antibody.



ARG41931 anti-CD90 / Thy 1 antibody IHC-P image

Immunohistochemistry: Paraffin-embedded Human kidney tissue stained with ARG41931 anti-CD90 / Thy 1 antibody.

ARG41931 anti-CD90 / Thy 1 antibody WB image

Western blot: Human fetal brain lysate stained with ARG41931 anti-CD90 / Thy 1 antibody.

