

## ARG41949 anti-CLIP2 / CLIP115 antibody

Package: 50 µl  
Store at: -20°C

### Summary

Product Description	Rabbit Polyclonal antibody recognizes CLIP2 / CLIP115
Tested Reactivity	Hu, Ms, Rat
Tested Application	WB
Host	Rabbit
Clonality	Polyclonal
Isotype	IgG
Target Name	CLIP2 / CLIP115
Species	Human
Immunogen	Synthetic peptide of Human CLIP2.
Conjugation	Un-conjugated
Alternate Names	WSCR4; WSCR3; CLIP; Cytoplasmic linker protein 2; Williams-Beuren syndrome chromosomal region 3 protein; WBSCR4; CAP-Gly domain-containing linker protein 2; Cytoplasmic linker protein 115; WBSCR3; Williams-Beuren syndrome chromosomal region 4 protein; CYLN2; CLIP-115

### Application Instructions

Application table	Application	Dilution
	WB	1:500 - 1:1000
Application Note	* The dilutions indicate recommended starting dilutions and the optimal dilutions or concentrations should be determined by the scientist.	
Observed Size	120 ~ 130 kDa	

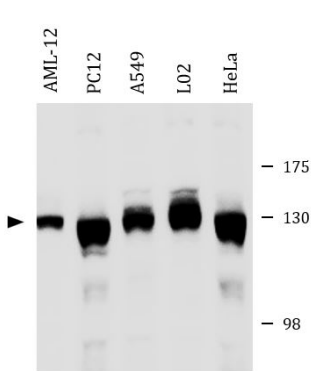
### Properties

Form	Liquid
Purification	Affinity purification with immunogen.
Purity	> 95% (by SDS-PAGE)
Buffer	PBS (pH 7.2), 0.02% Sodium azide and 50% Glycerol.
Preservative	0.02% Sodium azide
Stabilizer	50% Glycerol
Concentration	1 mg/ml
Storage instruction	For continuous use, store undiluted antibody at 2-8°C for up to a week. For long-term storage, aliquot and store at -20°C. Storage in frost free freezers is not recommended. Avoid repeated freeze/thaw cycles. Suggest spin the vial prior to opening. The antibody solution should be gently mixed before use.

Bioinformation

Gene Symbol	CLIP2
Gene Full Name	CAP-GLY domain containing linker protein 2
Background	The protein encoded by this gene belongs to the family of cytoplasmic linker proteins, which have been proposed to mediate the interaction between specific membranous organelles and microtubules. This protein was found to associate with both microtubules and an organelle called the dendritic lamellar body. This gene is hemizyously deleted in Williams syndrome, a multisystem developmental disorder caused by the deletion of contiguous genes at 7q11.23. Alternative splicing of this gene generates 2 transcript variants. [provided by RefSeq, Jul 2008]
Function	Seems to link microtubules to dendritic lamellar body (DLB), a membranous organelle predominantly present in bulbous dendritic appendages of neurons linked by dendrodendritic gap junctions. May operate in the control of brain-specific organelle translocations (By similarity). [UniProt]
Calculated Mw	116 kDa
Cellular Localization	Cytoplasm. Cytoplasm, cytoskeleton. Note=Localizes preferentially to the ends of tyrosinated microtubules. [UniProt]

Images



ARG41949 anti-CLIP2 / CLIP115 antibody WB image

Western blot: 40 µg of AML-12, PC12, A549, L02 and HeLa whole cell lysates stained with ARG41949 anti-CLIP2 / CLIP115 antibody at 1:500 dilution.