

ARG41958 anti-G0S2 antibody

Package: 100 µl
Store at: -20°C

Summary

Product Description	Rabbit Polyclonal antibody recognizes G0S2
Tested Reactivity	Hu
Tested Application	WB
Host	Rabbit
Clonality	Polyclonal
Isotype	IgG
Target Name	G0S2
Species	Human
Immunogen	Synthetic peptide within aa. 1-100 of Human G0S2 (NP_056529.1).
Conjugation	Un-conjugated
Alternate Names	G0/G1 switch regulatory protein 2; G0/G1 switch protein 2; Putative lymphocyte G0/G1 switch gene

Application Instructions

Application table	<table> <tr> <th>Application</th><th>Dilution</th></tr> <tr> <td>WB</td><td>1:500 - 1:2000</td></tr> </table>	Application	Dilution	WB	1:500 - 1:2000
Application	Dilution				
WB	1:500 - 1:2000				
Application Note	* The dilutions indicate recommended starting dilutions and the optimal dilutions or concentrations should be determined by the scientist.				
Positive Control	K562				
Observed Size	~ 13.5 kDa				

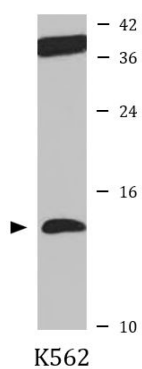
Properties

Form	Liquid
Purification	Affinity purified.
Buffer	PBS (pH 7.3), 0.02% Sodium azide and 50% Glycerol.
Preservative	0.02% Sodium azide
Stabilizer	50% Glycerol
Storage instruction	For continuous use, store undiluted antibody at 2-8°C for up to a week. For long-term storage, aliquot and store at -20°C. Storage in frost free freezers is not recommended. Avoid repeated freeze/thaw cycles. Suggest spin the vial prior to opening. The antibody solution should be gently mixed before use.
Note	For laboratory research only, not for drug, diagnostic or other use.

Bioinformation

Gene Symbol	G0S2
Gene Full Name	G0/G1 switch 2
Function	Promotes apoptosis by binding to BCL2, hence preventing the formation of protective BCL2-BAX heterodimers. [UniProt]
Calculated Mw	11 kDa
Cellular Localization	Mitochondrion. [UniProt]

Images



ARG41958 anti-G0S2 antibody WB image

Western blot: 25 µg of K562 cell lysate stained with ARG41958 anti-G0S2 antibody at 1:1000 dilution.