

ARG41960 anti-SLC25A28 / Mitoferrin 2 antibody

Package: 50 µl
Store at: -20°C

Summary

Product Description	Rabbit Polyclonal antibody recognizes SLC25A28 / Mitoferrin 2
Tested Reactivity	Hu
Predict Reactivity	Ms, Rat, Cow, Dog, Gpig, Hrs, Rb
Tested Application	IHC-P, WB
Host	Rabbit
Clonality	Polyclonal
Isotype	IgG
Target Name	SLC25A28 / Mitoferrin 2
Species	Human
Immunogen	Synthetic peptide around the C-terminal region of Human SLC25A28 / Mitoferrin 2. (within the following region: NTQES LALNS HITGH ITGMA SAFRT VYQVG GVTAY FRGVQ ARVIY QIPST)
Conjugation	Un-conjugated
Alternate Names	MFRN2; NPD016; Mitochondrial RNA-splicing protein 3/4 homolog; Mitoferrin-2; MRS3/4; hMRS3/4; MRS4L; Solute carrier family 25 member 28; Mitochondrial iron transporter 2

Application Instructions

Predict Reactivity Note	Predicted Homology Based On Immunogen Sequence: Cow: 86%; Dog: 93%; Guinea pig: 93%; Horse: 93%; Mouse: 93%; Rabbit: 93%; Rat: 93%						
Application table	<table> <thead> <tr> <th>Application</th><th>Dilution</th></tr> </thead> <tbody> <tr> <td>IHC-P</td><td>5 µg/ml</td></tr> <tr> <td>WB</td><td>1 µg/ml</td></tr> </tbody> </table>	Application	Dilution	IHC-P	5 µg/ml	WB	1 µg/ml
Application	Dilution						
IHC-P	5 µg/ml						
WB	1 µg/ml						
Application Note	* The dilutions indicate recommended starting dilutions and the optimal dilutions or concentrations should be determined by the scientist.						
Positive Control	MCF7						
Observed Size	~ 33 kDa						

Properties

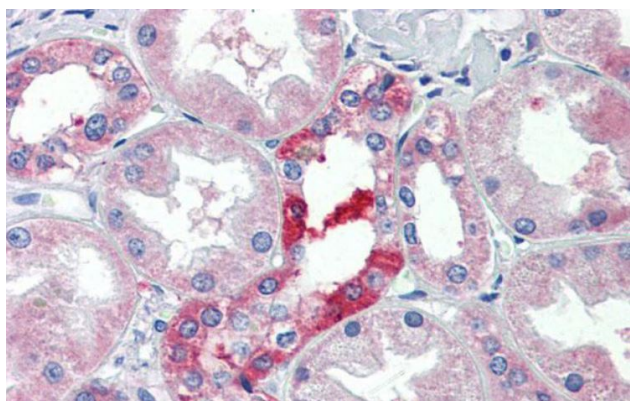
Form	Liquid
Purification	Affinity purified.
Buffer	PBS, 0.09% (w/v) Sodium azide and 2% Sucrose.
Preservative	0.09% (w/v) Sodium azide
Stabilizer	2% Sucrose

Concentration	Batch dependent: 0.5 - 1 mg/ml
Storage instruction	For continuous use, store undiluted antibody at 2-8°C for up to a week. For long-term storage, aliquot and store at -20°C or below. Storage in frost free freezers is not recommended. Avoid repeated freeze/thaw cycles. Suggest spin the vial prior to opening. The antibody solution should be gently mixed before use.
Note	For laboratory research only, not for drug, diagnostic or other use.

Bioinformation

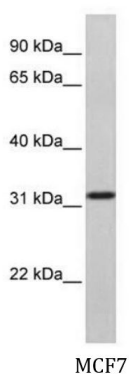
Gene Symbol	SLC25A28
Gene Full Name	solute carrier family 25 (mitochondrial iron transporter), member 28
Function	Mitochondrial iron transporter that mediates iron uptake. Probably required for heme synthesis of hemoproteins and Fe-S cluster assembly in non-erythroid cells. The iron delivered into the mitochondria, presumably as Fe(2+), is then probably delivered to ferrochelatase to catalyze Fe(2+) incorporation into protoporphyrin IX to make heme (By similarity). [UniProt]
Calculated Mw	39 kDa
Cellular Localization	Mitochondrion inner membrane; Multi-pass membrane protein. Note=Isoform 1 and isoform 2 are both localized in the mitochondrion. [UniProt]

Images



ARG41960 anti-SLC25A28 / Mitoferrin 2 antibody IHC-P image

Immunohistochemistry: Paraffin-embedded Human kidney tissue stained with ARG41960 anti-SLC25A28 / Mitoferrin 2 antibody at 5 µg/ml dilution.



ARG41960 anti-SLC25A28 / Mitoferrin 2 antibody WB image

Western blot: MCF7 whole cell lysate stained with ARG41960 anti-SLC25A28 / Mitoferrin 2 antibody at 1 µg/ml dilution.