

## ARG41961 anti-SLC25A28 / Mitoferrin 2 antibody

Package: 100 µl  
Store at: -20°C

### Summary

Product Description	Rabbit Polyclonal antibody recognizes SLC25A28 / Mitoferrin 2
Tested Reactivity	Hu
Tested Application	FACS, WB
Host	Rabbit
Clonality	Polyclonal
Isotype	IgG
Target Name	SLC25A28 / Mitoferrin 2
Species	Human
Immunogen	KLH-conjugated synthetic peptide between aa. 36-64 of Human SLC25A28 / Mitoferrin 2.
Conjugation	Un-conjugated
Alternate Names	MFRN2; NPD016; Mitochondrial RNA-splicing protein 3/4 homolog; Mitoferrin-2; MRS3/4; hMRS3/4; MRS4L; Solute carrier family 25 member 28; Mitochondrial iron transporter 2

### Application Instructions

Application table	Application	Dilution
	FACS	1:10 - 1:50
	WB	1:1000
Application Note	* The dilutions indicate recommended starting dilutions and the optimal dilutions or concentrations should be determined by the scientist.	
Positive Control	MCF7 and Jurkat	
Observed Size	36 - 40 kDa	

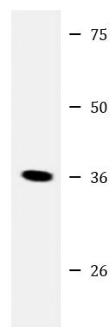
### Properties

Form	Liquid
Purification	Purification with Protein A and immunogen peptide.
Buffer	PBS and 0.09% (W/V) Sodium azide.
Preservative	0.09% (W/V) Sodium azide
Storage instruction	For continuous use, store undiluted antibody at 2-8°C for up to a week. For long-term storage, aliquot and store at -20°C or below. Storage in frost free freezers is not recommended. Avoid repeated freeze/thaw cycles. Suggest spin the vial prior to opening. The antibody solution should be gently mixed before use.
Note	For laboratory research only, not for drug, diagnostic or other use.

Bioinformation

Gene Symbol	SLC25A28
Gene Full Name	solute carrier family 25 (mitochondrial iron transporter), member 28
Function	Mitochondrial iron transporter that mediates iron uptake. Probably required for heme synthesis of hemoproteins and Fe-S cluster assembly in non-erythroid cells. The iron delivered into the mitochondria, presumably as Fe(2+), is then probably delivered to ferrochelatase to catalyze Fe(2+) incorporation into protoporphyrin IX to make heme (By similarity). [UniProt]
Calculated Mw	39 kDa
Cellular Localization	Mitochondrion inner membrane; Multi-pass membrane protein. Note=Isoform 1 and isoform 2 are both localized in the mitochondrion. [UniProt]

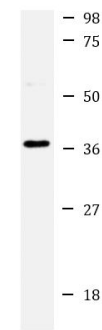
Images



MCF7

ARG41961 anti-SLC25A28 / Mitoferrin 2 antibody WB image

Western blot: 20 µg of MCF7 whole cell lysate stained with ARG41961 anti-SLC25A28 / Mitoferrin 2 antibody at 1:2000 dilution.



Jurkat

ARG41961 anti-SLC25A28 / Mitoferrin 2 antibody WB image

Western blot: 20 µg of Jurkat whole cell lysate stained with ARG41961 anti-SLC25A28 / Mitoferrin 2 antibody at 1:2000 dilution.