

ARG41973 anti-PTBP2 antibody

Package: 50 µg
Store at: -20°C

Summary

Product Description	Rabbit Polyclonal antibody recognizes PTBP2
Tested Reactivity	Hu, Ms, Rat
Tested Application	FACS, ICC/IF, IHC-P, WB
Host	Rabbit
Clonality	Polyclonal
Isotype	IgG
Target Name	PTBP2
Species	Human
Immunogen	Recombinant protein corresponding to M1-A504 of Human PTBP2.
Conjugation	Un-conjugated
Alternate Names	Polypyrimidine tract-binding protein 2; nPTB; PTBLP; Neurally-enriched homolog of PTB; Neural polypyrimidine tract-binding protein; brPTB; PTB-like protein

Application Instructions

Application table	Application	Dilution
	FACS	1:150 - 1:500
	ICC/IF	1:200 - 1:1000
	IHC-P	1:200 - 1:1000
	WB	1:500 - 1:2000
Application Note	IHC-P: Antigen Retrieval: Heat mediation was performed in Citrate buffer (pH 6.0, epitope retrieval solution) for 20 min. * The dilutions indicate recommended starting dilutions and the optimal dilutions or concentrations should be determined by the scientist.	
Observed Size	57 kDa	

Properties

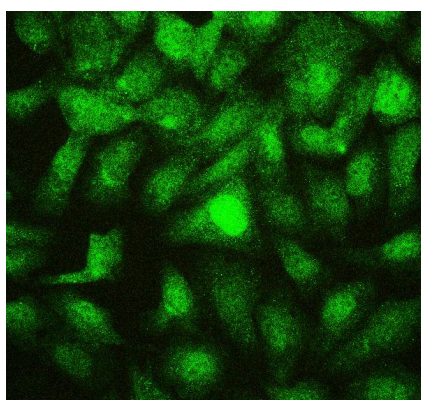
Form	Liquid
Purification	Affinity purification with immunogen.
Buffer	0.2% Na ₂ HPO ₄ , 0.9% NaCl, 0.05% Sodium azide and 4% Trehalose.
Preservative	0.05% Sodium azide
Stabilizer	4% Trehalose
Concentration	0.5 mg/ml

Storage instruction	For continuous use, store undiluted antibody at 2-8°C for up to a week. For long-term storage, aliquot and store at -20°C or below. Storage in frost free freezers is not recommended. Avoid repeated freeze/thaw cycles. Suggest spin the vial prior to opening. The antibody solution should be gently mixed before use.
Note	For laboratory research only, not for drug, diagnostic or other use.

Bioinformation

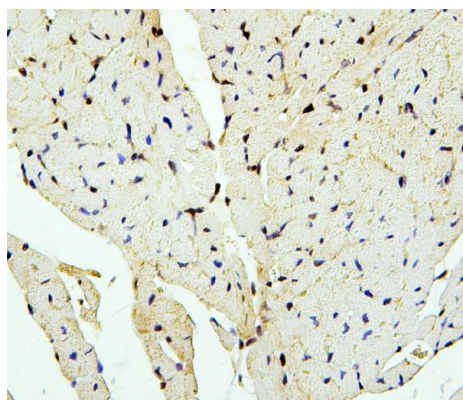
Gene Symbol	PTBP2
Gene Full Name	polypyrimidine tract binding protein 2
Background	The protein encoded by this gene binds to intronic polypyrimidine clusters in pre-mRNA molecules and is implicated in controlling the assembly of other splicing-regulatory proteins. This protein is very similar to the polypyrimidine tract binding protein (PTB) but most of its isoforms are expressed primarily in the brain. Alternative splicing results in multiple transcript variants. [provided by RefSeq, Jul 2014]
Function	RNA-binding protein which binds to intronic polypyrimidine tracts and mediates negative regulation of exons splicing. May antagonize in a tissue-specific manner the ability of NOVA1 to activate exon selection. In addition to its function in pre-mRNA splicing, plays also a role in the regulation of translation. Isoform 5 has a reduced affinity for RNA. [UniProt]
Calculated Mw	57 kDa
Cellular Localization	Nucleus. [UniProt]

Images



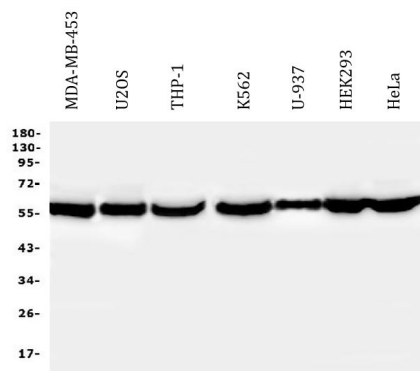
ARG41973 anti-PTBP2 antibody ICC/IF image

Immunofluorescence: U2OS cells were blocked with 10% goat serum and then stained with ARG41973 anti-PTBP2 antibody at 2 µg/ml dilution, overnight at 4°C.



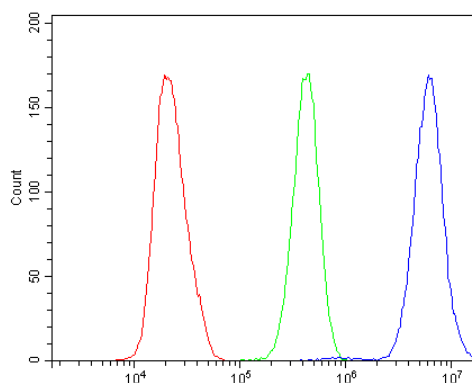
ARG41973 anti-PTBP2 antibody IHC-P image

Immunohistochemistry: Paraffin-embedded Mouse cardiac muscle tissue. Antigen Retrieval: Heat mediation was performed in Citrate buffer (pH 6.0, epitope retrieval solution) for 20 min. The tissue section was blocked with 10% goat serum. The tissue section was then stained with ARG41973 anti-PTBP2 antibody at 1 µg/ml dilution, overnight at 4°C.



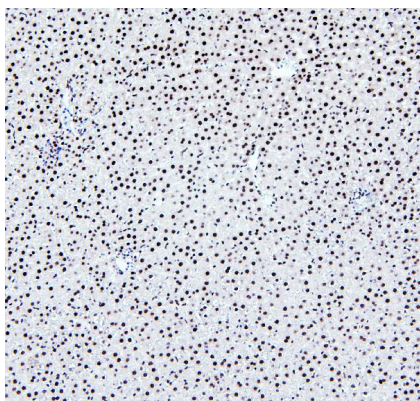
ARG41973 anti-PTBP2 antibody WB image

Western blot: 50 µg of samples under reducing conditions. MDA-MB-453, U2OS, THP-1, K562, U-937, HEK293 and HeLa whole cell lysates stained with ARG41973 anti-PTBP2 antibody at 0.5 µg/ml dilution, overnight at 4°C.



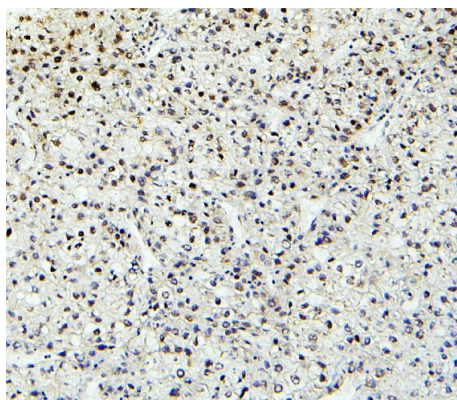
ARG41973 anti-PTBP2 antibody FACS image

Flow Cytometry: HeLa cells were blocked with 10% normal goat serum and then stained with ARG41973 anti-PTBP2 antibody (blue) at 1 µg/10⁶ cells for 30 min at 20°C, followed by incubation with DyLight®488 labelled secondary antibody. Isotype control antibody (green) was Rabbit IgG (1 µg/10⁶ cells) used under the same conditions. Unlabelled sample (red) was also used as a control.



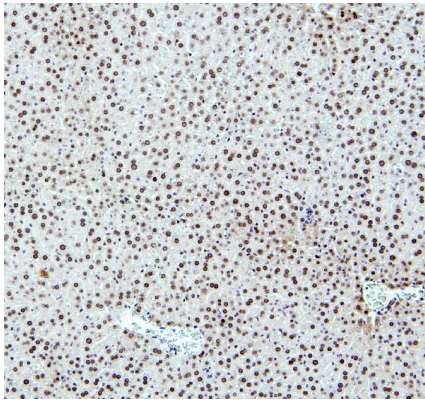
ARG41973 anti-PTBP2 antibody IHC-P image

Immunohistochemistry: Paraffin-embedded Rat liver tissue. Antigen Retrieval: Heat mediation was performed in Citrate buffer (pH 6.0, epitope retrieval solution) for 20 min. The tissue section was blocked with 10% goat serum. The tissue section was then stained with ARG41973 anti-PTBP2 antibody at 1 µg/ml dilution, overnight at 4°C.



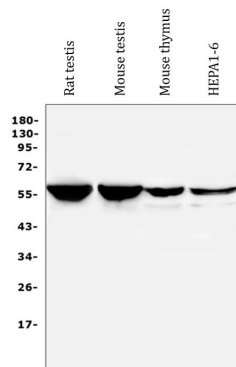
ARG41973 anti-PTBP2 antibody IHC-P image

Immunohistochemistry: Paraffin-embedded Human liver cancer tissue. Antigen Retrieval: Heat mediation was performed in Citrate buffer (pH 6.0, epitope retrieval solution) for 20 min. The tissue section was blocked with 10% goat serum. The tissue section was then stained with ARG41973 anti-PTBP2 antibody at 1 µg/ml dilution, overnight at 4°C.



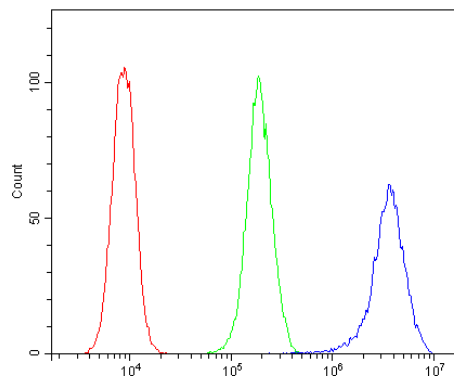
ARG41973 anti-PTBP2 antibody IHC-P image

Immunohistochemistry: Paraffin-embedded Mouse liver tissue. Antigen Retrieval: Heat mediation was performed in Citrate buffer (pH 6.0, epitope retrieval solution) for 20 min. The tissue section was blocked with 10% goat serum. The tissue section was then stained with ARG41973 anti-PTBP2 antibody at 1 µg/ml dilution, overnight at 4°C.



ARG41973 anti-PTBP2 antibody WB image

Western blot: 50 µg of samples under reducing conditions. Rat testis, Mouse testis, Mouse thymus and Mouse HEPA1-6 whole cell lysates stained with ARG41973 anti-PTBP2 antibody at 0.5 µg/ml dilution, overnight at 4°C.



ARG41973 anti-PTBP2 antibody FACS image

Flow Cytometry: THP-1 cells were blocked with 10% normal goat serum and then stained with ARG41973 anti-PTBP2 antibody (blue) at 1 µg/10⁶ cells for 30 min at 20°C, followed by incubation with DyLight®488 labelled secondary antibody. Isotype control antibody (green) was Rabbit IgG (1 µg/10⁶ cells) used under the same conditions. Unlabelled sample (red) was also used as a control.