

ARG41986 anti-MEKK2 antibody

Package: 100 µl
Store at: -20°C

Summary

| | |
|---------------------|---|
| Product Description | Rabbit Polyclonal antibody recognizes MEKK2 |
| Tested Reactivity | Hu, Ms, Rat |
| Tested Application | FACS, ICC/IF, IHC-P, IP, WB |
| Host | Rabbit |
| Clonality | Polyclonal |
| Isotype | IgG |
| Target Name | MEKK2 |
| Species | Human |
| Immunogen | Synthetic peptide of Human MEKK2. |
| Conjugation | Un-conjugated |
| Alternate Names | MAPK/ERK kinase kinase 2; MEKK2B; MEK kinase 2; EC 2.7.11.25; Mitogen-activated protein kinase kinase kinase 2; MEKK2; MEKK 2 |

Application Instructions

| Application table | Application | Dilution |
|-------------------|--|------------------|
| | FACS | 1:50 |
| | ICC/IF | 1:50 - 1:200 |
| | IHC-P | 1:50 - 1:200 |
| | IP | 1:30 |
| | WB | 1:5000 - 1:20000 |
| | | |
| Application Note | * The dilutions indicate recommended starting dilutions and the optimal dilutions or concentrations should be determined by the scientist. | |
| Positive Control | HeLa | |
| Observed Size | ~ 73 kDa | |

Properties

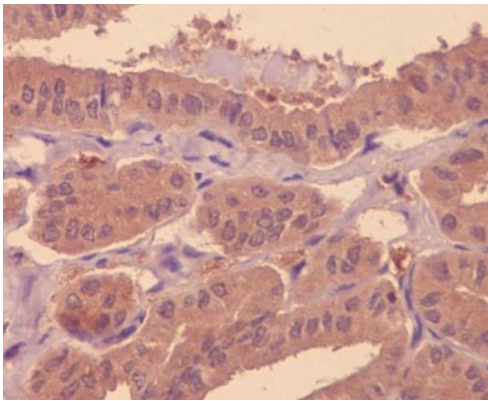
| | |
|--------------|---|
| Form | Liquid |
| Purification | Affinity purified. |
| Buffer | PBS (pH 7.4), 150 mM NaCl, 0.02% Sodium azide and 50% Glycerol. |
| Preservative | 0.02% Sodium azide |
| Stabilizer | 50% Glycerol |

| | |
|---------------------|---|
| Storage instruction | For continuous use, store undiluted antibody at 2-8°C for up to a week. For long-term storage, aliquot and store at -20°C. Storage in frost free freezers is not recommended. Avoid repeated freeze/thaw cycles. Suggest spin the vial prior to opening. The antibody solution should be gently mixed before use. |
| Note | For laboratory research only, not for drug, diagnostic or other use. |

Bioinformation

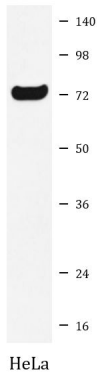
| | |
|-----------------------|---|
| Gene Symbol | MAP3K2 |
| Gene Full Name | mitogen-activated protein kinase kinase kinase 2 |
| Background | The protein encoded by this gene is a member of serine/threonine protein kinase family. This kinase preferentially activates other kinases involved in the MAP kinase signaling pathway. This kinase has been shown to directly phosphorylate and activate Ikappa B kinases, and thus plays a role in NF-kappa B signaling pathway. This kinase has also been found to bind and activate protein kinase C-related kinase 2, which suggests its involvement in a regulated signaling process. [provided by RefSeq, Jul 2008] |
| Function | Component of a protein kinase signal transduction cascade. Regulates the JNK and ERK5 pathways by phosphorylating and activating MAP2K5 and MAP2K7 (By similarity). Plays a role in caveolae kiss-and-run dynamics. [UniProt] |
| Calculated Mw | 70 kDa |
| PTM | Autophosphorylated. Ubiquitination by XIAP/BIRC4 does not lead to proteasomal degradation. [UniProt] |
| Cellular Localization | Cytoplasm. Nucleus. Note=Upon EGF stimulation, translocates into the nucleus. [UniProt] |

Images



ARG41986 anti-MEKK2 antibody IHC-P image

Immunohistochemistry: Paraffin-embedded Human thyroid cancer tissue stained with ARG41986 anti-MEKK2 antibody.



ARG41986 anti-MEKK2 antibody WB image

Western blot: HeLa cell lysate stained with ARG41986 anti-MEKK2 antibody.