

ARG42000 anti-ELP3 / KAT9 antibody

Package: 100 µl
Store at: -20°C

Summary

Product Description	Rabbit Polyclonal antibody recognizes ELP3 / KAT9
Tested Reactivity	Hu, Ms, Rat
Tested Application	ICC/IF, IP, WB
Host	Rabbit
Clonality	Polyclonal
Isotype	IgG
Target Name	ELP3 / KAT9
Species	Human
Immunogen	Synthetic peptide of Human ELP3 / KAT9.
Conjugation	Un-conjugated
Alternate Names	KAT9; Elongator complex protein 3; hELP3; EC 2.3.1.48

Application Instructions

Application table	Application	Dilution
	ICC/IF	1:50 - 1:200
	IP	1:50
	WB	1:500 - 1:2000
Application Note	* The dilutions indicate recommended starting dilutions and the optimal dilutions or concentrations should be determined by the scientist.	
Positive Control	HeLa	
Observed Size	~ 62 kDa	

Properties

Form	Liquid
Purification	Affinity purified.
Buffer	PBS (pH 7.4), 150 mM NaCl, 0.02% Sodium azide and 50% Glycerol.
Preservative	0.02% Sodium azide
Stabilizer	50% Glycerol
Storage instruction	For continuous use, store undiluted antibody at 2-8°C for up to a week. For long-term storage, aliquot and store at -20°C. Storage in frost free freezers is not recommended. Avoid repeated freeze/thaw cycles. Suggest spin the vial prior to opening. The antibody solution should be gently mixed before use.

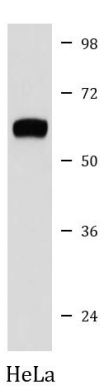
Note

For laboratory research only, not for drug, diagnostic or other use.

Bioinformation

Gene Symbol	ELP3
Gene Full Name	elongator acetyltransferase complex subunit 3
Background	ELP3 is the catalytic subunit of the histone acetyltransferase elongator complex, which contributes to transcript elongation and also regulates the maturation of projection neurons (Creppe et al., 2009 [PubMed 19185337]).[supplied by OMIM, Apr 2009]
Function	Catalytic histone acetyltransferase subunit of the RNA polymerase II elongator complex, which is a component of the RNA polymerase II (Pol II) holoenzyme and is involved in transcriptional elongation. Elongator may play a role in chromatin remodeling and is involved in acetylation of histones H3 and probably H4. Involved in acetylation of alpha-tubulin. May also have a methyltransferase activity. Involved in cell migration. Involved in neurogenesis. Regulates the migration and branching of projection neurons in the developing cerebral cortex, through a process depending on alpha-tubulin acetylation (By similarity). [UniProt]
Calculated Mw	62 kDa
Cellular Localization	Cytoplasm. Isoform 1: Nucleus. Isoform 2: Cytoplasm. Nucleus. [UniProt]

Images



ARG42000 anti-ELP3 / KAT9 antibody WB image

Western blot: HeLa cell lysate stained with ARG42000 anti-ELP3 / KAT9 antibody.