

## ARG42042 anti-ZNF429 antibody

Package: 50 µl  
Store at: -20°C

### Summary

|                     |  |
|---------------------|--|
| Product Description | Rabbit Polyclonal antibody recognizes ZNF429   |
| Tested Reactivity   | Hu   |
| Tested Application  | WB   |
| Host                | Rabbit   |
| Clonality           | Polyclonal   |
| Isotype             | IgG  |
| Target Name         | ZNF429   |
| Species             | Human  |
| Immunogen           | Synthetic peptide around the N-terminal region of Human ZNF429. (within the following region: KMYHC DIYVK VFYAF SNADR YKTRH TGKKP FQCKK CGKSF CMLSQ LTQHK) |
| Conjugation         | Un-conjugated  |

### Application Instructions

| Application table | <table> <tr> <th>Application</th><th>Dilution</th></tr> <tr> <td>WB</td><td>0.2 - 1 µg/ml</td></tr> </table>                               | Application | Dilution | WB | 0.2 - 1 µg/ml |
|-------------------|--|-------------|----------|----|---------------|
| Application       | Dilution   |             |          |    |               |
| WB                | 0.2 - 1 µg/ml  |             |          |    |               |
| Application Note  | * The dilutions indicate recommended starting dilutions and the optimal dilutions or concentrations should be determined by the scientist. |             |          |    |               |
| Positive Control  | HepG2  |             |          |    |               |
| Observed Size     | ~ 80 kDa   |             |          |    |               |

### Properties

|                     |  |
|---------------------|--|
| Form                | Liquid   |
| Purification        | Affinity purified.   |
| Buffer              | PBS, 0.09% (w/v) Sodium azide and 2% Sucrose.  |
| Preservative        | 0.09% (w/v) Sodium azide   |
| Stabilizer          | 2% Sucrose   |
| Concentration       | Batch dependent: 0.5 - 1 mg/ml   |
| Storage instruction | For continuous use, store undiluted antibody at 2-8°C for up to a week. For long-term storage, aliquot and store at -20°C or below. Storage in frost free freezers is not recommended. Avoid repeated freeze/thaw cycles. Suggest spin the vial prior to opening. The antibody solution should be gently mixed before use. |
| Note                | For laboratory research only, not for drug, diagnostic or other use.   |

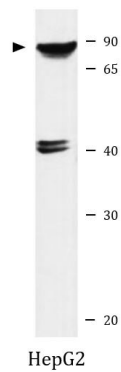
## Bioinformation

---

|                       |  |
|-----------------------|--|
| Gene Symbol           | ZNF429   |
| Gene Full Name        | zinc finger protein 429                                  |
| Function              | May be involved in transcriptional regulation. [UniProt] |
| Calculated Mw         | 78 kDa   |
| Cellular Localization | Nucleus. [UniProt]                                       |

---

## Images



ARG42042 anti-ZNF429 antibody WB image

Western blot: HepG2 cell lysate stained with ARG42042 anti-ZNF429 antibody at 0.2 - 1 µg/ml dilution.