

## ARG42055 anti-SOX13 antibody

Package: 50 µl  
Store at: -20°C

### Summary

Product Description	Rabbit Polyclonal antibody recognizes SOX13
Tested Reactivity	Hu, Ms
Tested Application	IHC-P, WB
Host	Rabbit
Clonality	Polyclonal
Isotype	IgG
Target Name	SOX13
Species	Human
Immunogen	Synthetic peptide of Human SOX13.
Conjugation	Un-conjugated
Alternate Names	ICA12; Transcription factor SOX-13; Islet cell antigen 12; Type 1 diabetes autoantigen ICA12; SRY; Sox-13; Sex determining region Y

### Application Instructions

Application table	Application	Dilution
	IHC-P	1:50 - 1:200
	WB	1:500 - 1:2000
Application Note	* The dilutions indicate recommended starting dilutions and the optimal dilutions or concentrations should be determined by the scientist.	
Positive Control	WB: Mouse liver IHC-P: Human tonsil and Human lung cancer	
Observed Size	~ 71 kDa	

### Properties

Form	Liquid
Purification	Affinity purification with immunogen.
Buffer	PBS (pH 7.4), 0.05% Sodium azide and 40% Glycerol.
Preservative	0.05% Sodium azide
Stabilizer	40% Glycerol
Concentration	0.4 mg/ml
Storage instruction	For continuous use, store undiluted antibody at 2-8°C for up to a week. For long-term storage, aliquot and store at -20°C. Storage in frost free freezers is not recommended. Avoid repeated freeze/thaw cycles. Suggest spin the vial prior to opening. The antibody solution should be gently mixed before use.

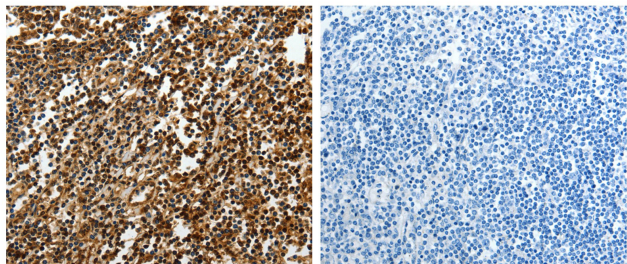
Note

For laboratory research only, not for drug, diagnostic or other use.

Bioinformation

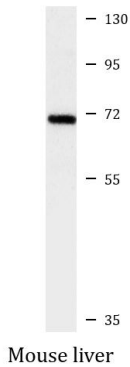
Gene Symbol	SOX13
Gene Full Name	SRY (sex determining region Y)-box 13
Background	This gene encodes a member of the SOX (SRY-related HMG-box) family of transcription factors involved in the regulation of embryonic development and in the determination of cell fate. The encoded protein may act as a transcriptional regulator after forming a protein complex with other proteins. It has also been determined to be a type-1 diabetes autoantigen, also known as islet cell antibody 12. [provided by RefSeq, Jul 2008]
Function	Binds to the sequence 5'-AACAAAT-3'. [UniProt]
Calculated Mw	69 kDa
Cellular Localization	Nucleus. [UniProt]

Images



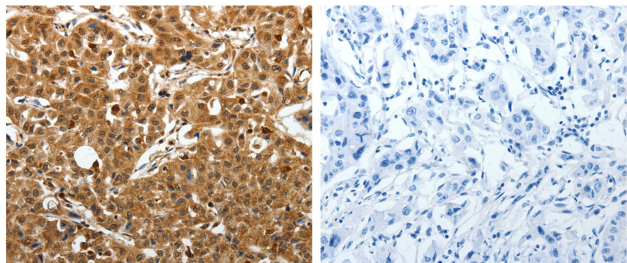
ARG42055 anti-SOX13 antibody IHC-P image

Immunohistochemistry: Paraffin-embedded Human tonsil tissue stained with ARG42055 anti-SOX13 antibody (left) at 1:50 dilution, or the same antibody pre-incubated with synthetic peptide (right). (Original magnification: X200).



ARG42055 anti-SOX13 antibody WB image

Western blot: 40 µg of Mouse liver lysate stained with ARG42055 anti-SOX13 antibody at 1:800 dilution.



#### ARG42055 anti-SOX13 antibody IHC-P image

Immunohistochemistry: Paraffin-embedded Human lung cancer tissue stained with ARG42055 anti-SOX13 antibody (left) at 1:50 dilution, or the same antibody pre-incubated with synthetic peptide (right). (Original magnification: X200).