

ARG42059
anti-CD106 / VCAM1 antibodyPackage: 100 µl
Store at: -20°C

Summary

Product Description	Rabbit Polyclonal antibody recognizes CD106 / VCAM1
Tested Reactivity	Hu, Ms, Rat
Tested Application	FACS, ICC/IF, IHC-Fr, IHC-P, IP, WB
Host	Rabbit
Clonality	Polyclonal
Isotype	IgG
Target Name	CD106 / VCAM1
Species	Human
Immunogen	Synthetic peptide of Human CD106 / VCAM1.
Conjugation	Un-conjugated
Alternate Names	CD106; INCAM-100; Vascular cell adhesion protein 1; VCAM-1; CD antigen CD106; V-CAM 1

Application Instructions

Application table	Application	Dilution
	FACS	1:50
	ICC/IF	1:50 - 1:200
	IHC-Fr	1:50 - 1:200
	IHC-P	1:50 - 1:200
	IP	1:20
	WB	1:500 - 1:2000
Application Note	* The dilutions indicate recommended starting dilutions and the optimal dilutions or concentrations should be determined by the scientist.	
Positive Control	Mouse kidney	
Observed Size	~ 100 kDa	

Properties

Form	Liquid
Purification	Affinity purified.
Buffer	PBS (pH 7.4), 150 mM NaCl, 0.02% Sodium azide and 50% Glycerol.
Preservative	0.02% Sodium azide
Stabilizer	50% Glycerol

Storage instruction	For continuous use, store undiluted antibody at 2-8°C for up to a week. For long-term storage, aliquot and store at -20°C. Storage in frost free freezers is not recommended. Avoid repeated freeze/thaw cycles. Suggest spin the vial prior to opening. The antibody solution should be gently mixed before use.
Note	For laboratory research only, not for drug, diagnostic or other use.

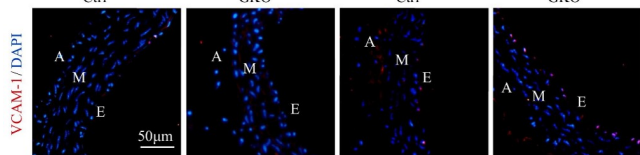
Bioinformation

Gene Symbol	VCAM1
Gene Full Name	vascular cell adhesion molecule 1
Background	This gene is a member of the Ig superfamily and encodes a cell surface sialoglycoprotein expressed by cytokine-activated endothelium. This type I membrane protein mediates leukocyte-endothelial cell adhesion and signal transduction, and may play a role in the development of atherosclerosis and rheumatoid arthritis. Three alternatively spliced transcripts encoding different isoforms have been described for this gene. [provided by RefSeq, Dec 2010]
Function	Important in cell-cell recognition. Appears to function in leukocyte-endothelial cell adhesion. Interacts with integrin alpha-4/beta-1 (ITGA4/ITGB1) on leukocytes, and mediates both adhesion and signal transduction. The VCAM1/ITGA4/ITGB1 interaction may play a pathophysiologic role both in immune responses and in leukocyte emigration to sites of inflammation. [UniProt]
Calculated Mw	81 kDa
PTM	Sialoglycoprotein. [UniProt]
Cellular Localization	Membrane; Single-pass type I membrane protein. [UniProt]

Images

B

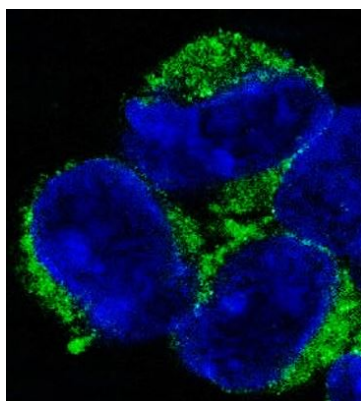
	3M	10M		
	Ctrl	GKO	Ctrl	GKO



ARG42059 anti-CD106 / VCAM1 antibody IHC-Fr image

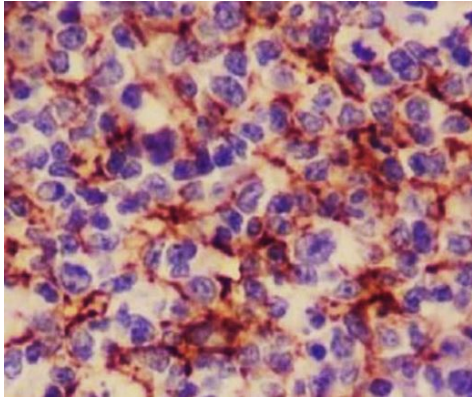
Immunohistochemistry: Mouse endothelial stained with ARG42059 anti-CD106 / VCAM1 antibody at 1:100 dilution.

From Rui Fan et al. *Biochim Biophys Acta Mol Cell Biol Lipids.* (2023), doi: [10.1016/j.bbalip.2023.159330](https://doi.org/10.1016/j.bbalip.2023.159330), Fig. 2B.



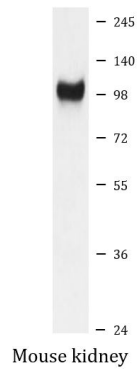
ARG42059 anti-CD106 / VCAM1 antibody ICC/IF image

Immunofluorescence: K562 cells stained with ARG42059 anti-CD106 / VCAM1 antibody.



ARG42059 anti-CD106 / VCAM1 antibody IHC-P image

Immunohistochemistry: Paraffin-embedded Human tonsil tissue stained with ARG42059 anti-CD106 / VCAM1 antibody.



ARG42059 anti-CD106 / VCAM1 antibody WB image

Western blot: Mouse kidney lysate stained with ARG42059 anti-CD106 / VCAM1 antibody.