

ARG42067 anti-CLEC4M / DC-SIGNR / L-SIGN antibody

Package: 50 µl
Store at: -20°C

Summary

Product Description	Rabbit Polyclonal antibody recognizes CLEC4M / DC-SIGNR / L-SIGN
Tested Reactivity	Hu
Predict Reactivity	Pig
Tested Application	IHC-P, WB
Host	Rabbit
Clonality	Polyclonal
Isotype	IgG
Target Name	CLEC4M / DC-SIGNR / L-SIGN
Species	Human
Immunogen	Synthetic peptide around the N-terminal region of Human CLEC4M. (within the following region: LVLQL LSFML LAGVL VAILV QVSKV PSSLS QEQSE QDAIY QNLTQ LKAAV)
Conjugation	Un-conjugated
Alternate Names	LSIGN; DC-SIGNR; CD209L; DCSIGNR; CD antigen CD299; Dendritic cell-specific ICAM-3-grabbing non-integrin 2; CD299; DC-SIGN-related protein; L-SIGN; Liver/lymph node-specific ICAM-3-grabbing non-integrin; HP10347; C-type lectin domain family 4 member M; DC-SIGN2; CD209 antigen-like protein 1

Application Instructions

Predict Reactivity Note	Predicted Homology Based On Immunogen Sequence: Pig: 86%						
Application table	<table> <tr> <th>Application</th><th>Dilution</th></tr> <tr> <td>IHC-P</td><td>Assay-dependent</td></tr> <tr> <td>WB</td><td>1 - 5 µg/ml</td></tr> </table>	Application	Dilution	IHC-P	Assay-dependent	WB	1 - 5 µg/ml
Application	Dilution						
IHC-P	Assay-dependent						
WB	1 - 5 µg/ml						
Application Note	* The dilutions indicate recommended starting dilutions and the optimal dilutions or concentrations should be determined by the scientist.						
Positive Control	HepG2						
Observed Size	~ 57 kDa						

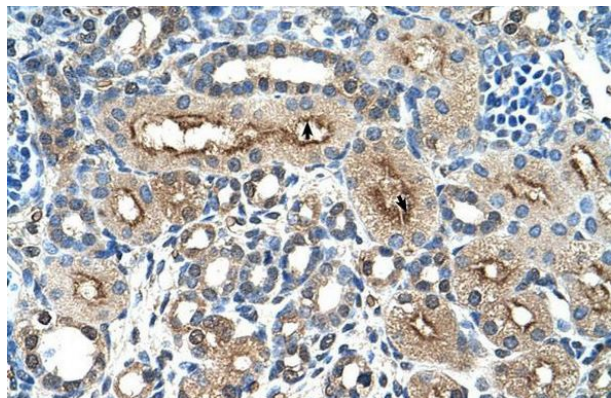
Properties

Form	Liquid
Purification	Purification with Protein A.
Buffer	PBS, 0.09% (w/v) Sodium azide and 2% Sucrose.
Preservative	0.09% (w/v) Sodium azide
Stabilizer	2% Sucrose

Concentration	Batch dependent: 0.5 - 1 mg/ml
Storage instruction	For continuous use, store undiluted antibody at 2-8°C for up to a week. For long-term storage, aliquot and store at -20°C or below. Storage in frost free freezers is not recommended. Avoid repeated freeze/thaw cycles. Suggest spin the vial prior to opening. The antibody solution should be gently mixed before use.
Note	For laboratory research only, not for drug, diagnostic or other use.

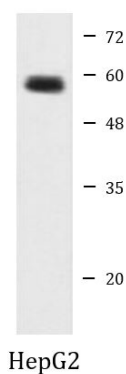
Bioinformation

Gene Symbol	CLEC4M
Gene Full Name	C-type lectin domain family 4, member M
Background	<p>This gene encodes a transmembrane receptor and is often referred to as L-SIGN because of its expression in the endothelial cells of the lymph nodes and liver. The encoded protein is involved in the innate immune system and recognizes numerous evolutionarily divergent pathogens ranging from parasites to viruses, with a large impact on public health. The protein is organized into three distinct domains: an N-terminal transmembrane domain, a tandem-repeat neck domain and C-type lectin carbohydrate recognition domain. The extracellular region consisting of the C-type lectin and neck domains has a dual function as a pathogen recognition receptor and a cell adhesion receptor by binding carbohydrate ligands on the surface of microbes and endogenous cells. The neck region is important for homo-oligomerization which allows the receptor to bind multivalent ligands with high avidity. Variations in the number of 23 amino acid repeats in the neck domain of this protein are common and have a significant impact on ligand binding ability. This gene is closely related in terms of both sequence and function to a neighboring gene (GeneID 30835; often referred to as DC-SIGN or CD209). DC-SIGN and L-SIGN differ in their ligand-binding properties and distribution. Alternative splicing results in multiple variants. [provided by RefSeq, Feb 2009]</p>
Function	<p>Probable pathogen-recognition receptor involved in peripheral immune surveillance in liver. May mediate the endocytosis of pathogens which are subsequently degraded in lysosomal compartments. Is a receptor for ICAM3, probably by binding to mannose-like carbohydrates.</p> <p>(Microbial infection) Acts as an attachment receptor for Ebolavirus, Hepatitis C virus, HIV-1, Human coronavirus 229E, Human cytomegalovirus/HHV-5, Influenzavirus, SARS coronavirus, West-nile virus, Japanese encephalitis virus and Marburg virus glycoprotein.</p> <p>(Microbial infection) Recognition of <i>M. bovis</i> by dendritic cells may occur partially via this molecule. [UniProt]</p>
Calculated Mw	45 kDa
Cellular Localization	Isoform 1, 2 and 3: Cell membrane; Single-pass type II membrane protein. Isoform 5, 6, 7 and 10: Secreted. [UniProt]



ARG42067 anti-CLEC4M / DC-SIGNR / L-SIGN antibody IHC-P image

Immunohistochemistry: Paraffin-embedded Human kidney tissue stained with ARG42067 anti-CLEC4M / DC-SIGNR / L-SIGN antibody.



ARG42067 anti-CLEC4M / DC-SIGNR / L-SIGN antibody WB image

Western blot: HepG2 cell lysate stained with ARG42067 anti-CLEC4M / DC-SIGNR / L-SIGN antibody at 1.25 µg/ml dilution.