

ARG42071 anti-CRLS1 antibody

Package: 100 µl
Store at: -20°C

Summary

Product Description	Rabbit Polyclonal antibody recognizes CRLS1
Tested Reactivity	Hu
Predict Reactivity	Ms, Rat
Tested Application	IHC-P, WB
Host	Rabbit
Clonality	Polyclonal
Isotype	IgG
Target Name	CRLS1
Species	Human
Immunogen	KLH-conjugated synthetic peptide between aa. 198-226 of Human CRLS1.
Conjugation	Un-conjugated
Alternate Names	CLS; CLS1; GCD10; C20orf155; dJ967N21.6; Cardiolipin synthase (CMP-forming); CLS; EC 2.7.8.41; Protein GCD10 homolog

Application Instructions

Application table	Application	Dilution
	IHC-P	1:50 - 1:100
	WB	1:1000
Application Note	* The dilutions indicate recommended starting dilutions and the optimal dilutions or concentrations should be determined by the scientist.	
Positive Control	T47D	
Observed Size	~ 32 kDa	

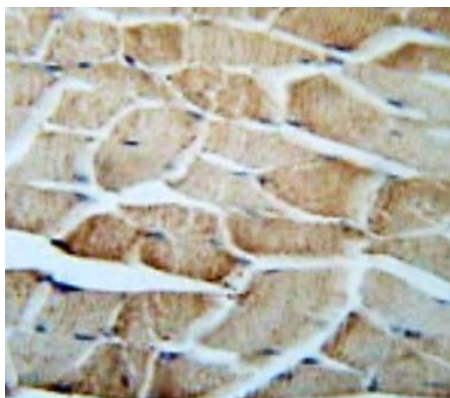
Properties

Form	Liquid
Purification	Purification with Protein A and immunogen peptide.
Buffer	PBS and 0.09% (W/V) Sodium azide.
Preservative	0.09% (W/V) Sodium azide.
Storage instruction	For continuous use, store undiluted antibody at 2-8°C for up to a week. For long-term storage, aliquot and store at -20°C or below. Storage in frost free freezers is not recommended. Avoid repeated freeze/thaw cycles. Suggest spin the vial prior to opening. The antibody solution should be gently mixed before use.

Bioinformation

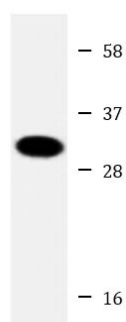
Gene Symbol	CRLS1
Gene Full Name	cardiolipin synthase 1
Background	This gene encodes a member of the CDP-alcohol phosphatidyltransferase class-I family of proteins. The encoded enzyme catalyzes the synthesis of cardiolipin, a phospholipid component of mitochondrial membranes that is critical for mitochondrial function. [provided by RefSeq, Apr 2016]
Function	Catalyzes the synthesis of cardiolipin (CL) (diphosphatidylglycerol) by specifically transferring a phosphatidyl group from CDP-diacylglycerol to phosphatidylglycerol (PG). CL is a key phospholipid in mitochondrial membranes and plays important roles in maintaining the functional integrity and dynamics of mitochondria under both optimal and stress conditions. [UniProt]
Calculated Mw	33 kDa
Cellular Localization	Mitochondrion inner membrane; Multi-pass membrane protein. [UniProt]

Images



ARG42071 anti-CRLS1 antibody IHC-P image

Immunohistochemistry: Formalin-fixed and paraffin-embedded Human skeletal muscle tissue stained with ARG42071 anti-CRLS1 antibody.



T47D

ARG42071 anti-CRLS1 antibody WB image

Western blot: 20 µg of T47D whole cell lysate stained with ARG42071 anti-CRLS1 antibody at 1:1000 dilution.