

ARG42077
anti-CNTN1 / Contactin 1 antibodyPackage: 100 µl
Store at: -20°C

Summary

Product Description	Rabbit Polyclonal antibody recognizes CNTN1 / Contactin 1
Tested Reactivity	Hu
Predict Reactivity	Ms, Rat, Bov
Tested Application	WB
Host	Rabbit
Clonality	Polyclonal
Isotype	IgG
Target Name	CNTN1 / Contactin 1
Species	Human
Immunogen	KLH-conjugated synthetic peptide between aa. 635-662 of Human CNTN1.
Conjugation	Un-conjugated
Alternate Names	Contactin-1; F3; Glycoprotein gp135; GP135; Neural cell surface protein F3; MYPCN

Application Instructions

Application table	<table><thead><tr><th>Application</th><th>Dilution</th></tr></thead><tbody><tr><td>WB</td><td>1:1000</td></tr></tbody></table>	Application	Dilution	WB	1:1000
Application	Dilution				
WB	1:1000				
Application Note	* The dilutions indicate recommended starting dilutions and the optimal dilutions or concentrations should be determined by the scientist.				
Positive Control	Human brain				
Observed Size	~ 130 kDa				

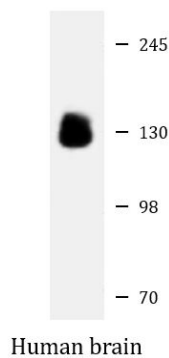
Properties

Form	Liquid
Purification	Purification with Protein A and immunogen peptide.
Buffer	PBS and 0.09% (W/V) Sodium azide.
Preservative	0.09% (W/V) Sodium azide.
Storage instruction	For continuous use, store undiluted antibody at 2-8°C for up to a week. For long-term storage, aliquot and store at -20°C or below. Storage in frost free freezers is not recommended. Avoid repeated freeze/thaw cycles. Suggest spin the vial prior to opening. The antibody solution should be gently mixed before use.
Note	For laboratory research only, not for drug, diagnostic or other use.

Bioinformation

Gene Symbol	CNTN1
Gene Full Name	contactin 1
Background	The protein encoded by this gene is a member of the immunoglobulin superfamily. It is a glycosylphosphatidylinositol (GPI)-anchored neuronal membrane protein that functions as a cell adhesion molecule. It may play a role in the formation of axon connections in the developing nervous system. Multiple alternatively spliced transcript variants encoding different isoforms have been found for this gene. [provided by RefSeq, Dec 2011]
Function	Contactins mediate cell surface interactions during nervous system development. Involved in the formation of paranodal axo-glia junctions in myelinated peripheral nerves and in the signaling between axons and myelinating glial cells via its association with CNTNAP1. Participates in oligodendrocyte generation by acting as a ligand of NOTCH1. Its association with NOTCH1 promotes NOTCH1 activation through the released notch intracellular domain (NICD) and subsequent translocation to the nucleus. Interaction with TNR induces a repulsion of neurons and an inhibition of neurite outgrowth (By similarity). [UniProt]
Calculated Mw	113 kDa
Cellular Localization	Isoform 1: Cell membrane; Lipid-anchor, GPI-anchor; Extracellular side. Isoform 2: Cell membrane; Lipid-anchor, GPI-anchor; Extracellular side. [UniProt]

Images



ARG42077 anti-CNTN1 / Contactin 1 antibody WB image

Western blot: 20 µg of Human brain lysate stained with ARG42077 anti-CNTN1 / Contactin 1 antibody at 1:1000 dilution.