

## ARG42080 anti-CNTN2 / Contactin 2 antibody

Package: 100 µl  
Store at: -20°C

### Summary

Product Description	Rabbit Polyclonal antibody recognizes CNTN2 / Contactin 2
Tested Reactivity	Hu, Ms
Tested Application	FACS, ICC/IF, WB
Host	Rabbit
Clonality	Polyclonal
Isotype	IgG
Target Name	CNTN2 / Contactin 2
Species	Human
Immunogen	Synthetic peptide of Human CNTN2 / Contactin 2.
Conjugation	Un-conjugated
Alternate Names	TAG-1; AXT; TAX; Contactin-2; TAX-1; TAX1; FAME5; Transient axonal glycoprotein 1; Axonin-1; Axonal glycoprotein TAG-1

### Application Instructions

Application table	Application	Dilution
	FACS	1:50
	ICC/IF	1:50 - 1:200
	WB	1:1000 - 1:5000
Application Note	* The dilutions indicate recommended starting dilutions and the optimal dilutions or concentrations should be determined by the scientist.	
Positive Control	U87-MG	
Observed Size	~ 140 kDa	
Assay Time	Q02246	

### Properties

Form	Liquid
Purification	Affinity purified.
Buffer	PBS (pH 7.4), 150 mM NaCl, 0.02% Sodium azide and 50% Glycerol.
Preservative	0.02% Sodium azide
Stabilizer	50% Glycerol
Storage instruction	For continuous use, store undiluted antibody at 2-8°C for up to a week. For long-term storage, aliquot and store at -20°C. Storage in frost free freezers is not recommended. Avoid repeated freeze/thaw

cycles. Suggest spin the vial prior to opening. The antibody solution should be gently mixed before use.

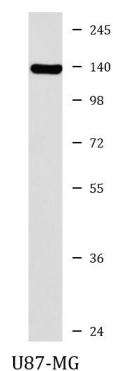
#### Note

For laboratory research only, not for drug, diagnostic or other use.

## Bioinformation

Gene Symbol	CNTN2
Gene Full Name	contactin 2 (axonal)
Background	This gene encodes a member of the contactin family of proteins, part of the immunoglobulin superfamily of cell adhesion molecules. The encoded glycosylphosphatidylinositol (GPI)-anchored neuronal membrane protein plays a role in the proliferation, migration, and axon guidance of neurons of the developing cerebellum. A mutation in this gene may be associated with adult myoclonic epilepsy. [provided by RefSeq, Sep 2016]
Function	In conjunction with another transmembrane protein, CNTNAP2, contributes to the organization of axonal domains at nodes of Ranvier by maintaining voltage-gated potassium channels at the juxtaparanodal region. May be involved in cell adhesion. [UniProt]
Calculated Mw	113 kDa
Cellular Localization	Cell membrane; Lipid-anchor, GPI-anchor. Note=Attached to the neuronal membrane by a GPI-anchor and is also released from neurons. [UniProt]

## Images



ARG42080 anti-CNTN2 / Contactin 2 antibody WB image

Western blot: U87-MG cell lysate stained with ARG42080 anti-CNTN2 / Contactin 2 antibody.