

## ARG42095 anti-SLC6A8 antibody

Package: 50 µg  
Store at: -20°C

### Summary

Product Description	Goat Polyclonal antibody recognizes SLC6A8
Tested Reactivity	Hu, Ms
Predict Reactivity	Cow, Rat, Dog, Pig
Tested Application	IHC-P, WB
Host	Goat
Clonality	Polyclonal
Isotype	IgG
Target Name	SLC6A8
Species	Human
Immunogen	Synthetic peptide around the internal region of Human SLC6A8. (ASLANLTCDQLADRR) (NP_005620.1; NP_001136277.1; NP_001136278.1)
Conjugation	Un-conjugated
Alternate Names	Solute carrier family 6 member 8; CCDS1; CT1; CRT; Creatine transporter 1; CRTR; CTR5; Sodium- and chloride-dependent creatine transporter 1

### Application Instructions

Application table	Application	Dilution
	IHC-P	5 µg/ml
	WB	0.1 - 0.3 µg/ml
Application Note	IHC-P: Antigen Retrieval: Steam tissue section in Citrate buffer (pH 6.0). WB: Recommend incubate at RT for 1h. * The dilutions indicate recommended starting dilutions and the optimal dilutions or concentrations should be determined by the scientist.	
Observed Size	~ 70 kDa	

### Properties

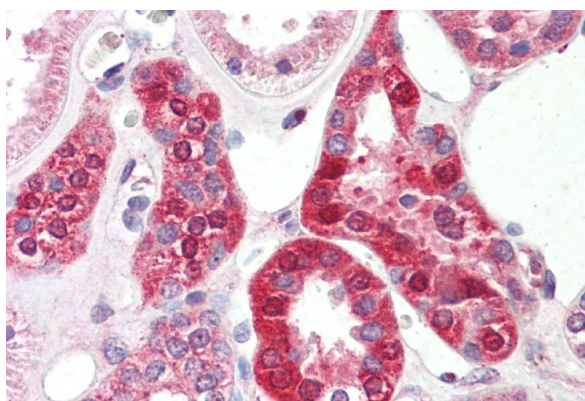
Form	Liquid
Purification	Affinity purified
Buffer	Tris saline (pH 7.3), 0.02% Sodium azide and 0.5% BSA.
Preservative	0.02% Sodium azide
Stabilizer	0.5% BSA
Concentration	0.5 mg/ml

Storage instruction	For continuous use, store undiluted antibody at 2-8°C for up to a week. For long-term storage, aliquot and store at -20°C or below. Storage in frost free freezers is not recommended. Avoid repeated freeze/thaw cycles. Suggest spin the vial prior to opening. The antibody solution should be gently mixed before use.
Note	For laboratory research only, not for drug, diagnostic or other use.

## Bioinformation

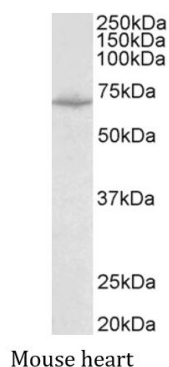
Gene Symbol	SLC6A8
Gene Full Name	solute carrier family 6 (neurotransmitter transporter), member 8
Background	The protein encoded by this gene is a plasma membrane protein whose function is to transport creatine into and out of cells. Defects in this gene can result in X-linked creatine deficiency syndrome. Multiple transcript variants encoding different isoforms have been found for this gene. [provided by RefSeq, Dec 2008]
Function	Required for the uptake of creatine in muscles and brain. [UniProt]
Calculated Mw	71 kDa
Cellular Localization	Membrane; Multi-pass membrane protein. [UniProt]

## Images



ARG42095 anti-SLC6A8 antibody IHC-P image

Immunohistochemistry: Paraffin-embedded Human kidney tissue. Antigen Retrieval: Steam tissue section in Citrate buffer (pH 6.0). The tissue section was stained with ARG42095 anti-SLC6A8 antibody at 5 µg/ml dilution followed by AP-staining.



ARG42095 anti-SLC6A8 antibody WB image

Western blot: 35 µg of Mouse heart lysate (in RIPA buffer) stained with ARG42095 anti-SLC6A8 antibody at 0.1 µg/ml dilution and incubated at RT for 1 hour.