

ARG42129 anti-Mylipb antibody

Package: 100 µl
Store at: -20°C

Summary

Product Description	Rabbit Polyclonal antibody recognizes Mylipb
Tested Reactivity	Zfish
Tested Application	WB
Host	Rabbit
Clonality	Polyclonal
Isotype	IgG
Target Name	Mylipb
Species	Zebrafish
Immunogen	KLH-conjugated synthetic peptide between aa. 440-475 of Zebrafish Mylipb.
Conjugation	Un-conjugated

Application Instructions

Application table	Application	Dilution
	WB	1:1000
Application Note	* The dilutions indicate recommended starting dilutions and the optimal dilutions or concentrations should be determined by the scientist.	
Positive Control	Zebrafish muscle	
Observed Size	~ 43 kDa	

Properties

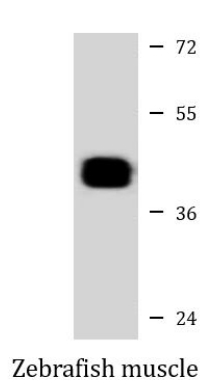
Form	Liquid
Purification	Purification with Protein A and immunogen peptide.
Buffer	PBS and 0.09% (W/V) Sodium azide.
Preservative	0.09% (W/V) Sodium azide
Storage instruction	For continuous use, store undiluted antibody at 2-8°C for up to a week. For long-term storage, aliquot and store at -20°C or below. Storage in frost free freezers is not recommended. Avoid repeated freeze/thaw cycles. Suggest spin the vial prior to opening. The antibody solution should be gently mixed before use.
Note	For laboratory research only, not for drug, diagnostic or other use.

Bioinformation

Gene Symbol	mylipb
-------------	--------

Gene Full Name	myosin regulatory light chain interacting protein b
Function	E3 ubiquitin-protein ligase that mediates ubiquitination and subsequent proteasomal degradation of myosin regulatory light chain (MRLC). Regulates cell movements during gastrulation by acting downstream of fz7 to antagonize the frizzled-signaling pathway (By similarity). [UniProt]
Calculated Mw	53 kDa

Images



ARG42129 anti-Mylipb antibody WB image

Western blot: 35 µg of Zebrafish muscle lysate stained with ARG42129 anti-Mylipb antibody at 1:1000 dilution.