

## ARG42131 anti-SH3GL1 / EEN antibody

Package: 50 µg  
Store at: -20°C

### Summary

Product Description	Goat Polyclonal antibody recognizes SH3GL1 / EEN
Tested Reactivity	Hu
Predict Reactivity	Cow, Dog
Tested Application	IHC-P, WB
Host	Goat
Clonality	Polyclonal
Isotype	IgG
Target Name	SH3GL1 / EEN
Species	Human
Immunogen	Synthetic peptide around the internal region of Human SH3GL1 / EEN. (C-EPFDLGEPEQSN) (NP_003016.1)
Conjugation	Un-conjugated
Alternate Names	SH3P8; Extra eleven-nineteen leukemia fusion gene protein; Endophilin-A2; CNSA1; EEN; SH3 domain protein 2B; Endophilin-2; EEN fusion partner of MLL; SH3D2B; SH3 domain-containing GRB2-like protein 1

### Application Instructions

Application table	Application	Dilution
	IHC-P	5 µg/ml
	WB	0.3 - 1 µg/ml
Application Note	WB: Recommend incubate at RT for 1h. IHC-P: Antigen Retrieval: Steam tissue section in Citrate buffer (pH 6.0). * The dilutions indicate recommended starting dilutions and the optimal dilutions or concentrations should be determined by the scientist.	
Positive Control	K562	
Observed Size	~ 45 kDa	

### Properties

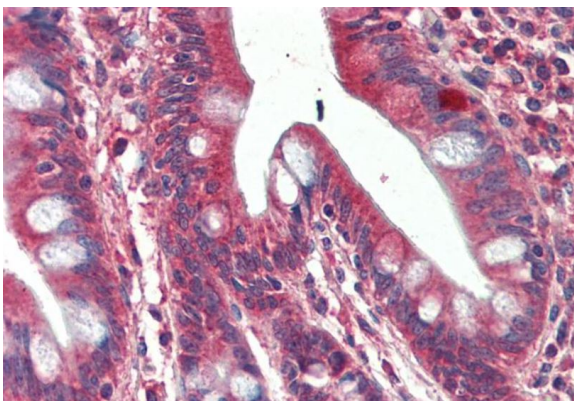
Form	Liquid
Purification	Affinity purified
Buffer	Tris saline (pH 7.3), 0.02% Sodium azide and 0.5% BSA.
Preservative	0.02% Sodium azide
Stabilizer	0.5% BSA

Concentration	0.5 mg/ml
Storage instruction	For continuous use, store undiluted antibody at 2-8°C for up to a week. For long-term storage, aliquot and store at -20°C or below. Storage in frost free freezers is not recommended. Avoid repeated freeze/thaw cycles. Suggest spin the vial prior to opening. The antibody solution should be gently mixed before use.
Note	For laboratory research only, not for drug, diagnostic or other use.

## Bioinformation

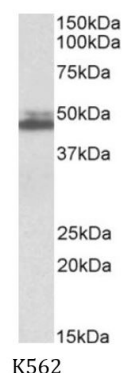
Gene Symbol	SH3GL1
Gene Full Name	SH3-domain GRB2-like 1
Background	This gene encodes a member of the endophilin family of Src homology 3 domain-containing proteins. The encoded protein is involved in endocytosis and may also play a role in the cell cycle. Overexpression of this gene may play a role in leukemogenesis, and the encoded protein has been implicated in acute myeloid leukemia as a fusion partner of the myeloid-lymphoid leukemia protein. Pseudogenes of this gene are located on the long arm of chromosomes 11 and 17. Alternatively spliced transcript variants encoding multiple isoforms have been observed for this gene. [provided by RefSeq, Jan 2011]
Function	Implicated in endocytosis. May recruit other proteins to membranes with high curvature (By similarity). [UniProt]
Calculated Mw	41 kDa
Cellular Localization	Cytoplasm. Early endosome membrane; Peripheral membrane protein. Cell projection, podosome. Note=Associated with postsynaptic endosomes in hippocampal neurons. [UniProt]

## Images



ARG42131 anti-SH3GL1 / EEN antibody IHC-P image

Immunohistochemistry: Paraffin-embedded Human small intestine tissue. Antigen Retrieval: Steam tissue section in Citrate buffer (pH 6.0). The tissue section was stained with ARG42131 anti-SH3GL1 / EEN antibody at 5 µg/ml dilution followed by AP-staining.



ARG42131 anti-SH3GL1 / EEN antibody WB image

Western blot: 35 µg of K562 cell lysate (in RIPA buffer) stained with ARG42131 anti-SH3GL1 / EEN antibody at 0.3 µg/ml dilution and incubated at RT for 1 hour.