

ARG42145 anti-KLHL25 antibody

Package: 50 µl
Store at: -20°C

Summary

Product Description	Rabbit Polyclonal antibody recognizes KLHL25
Tested Reactivity	Hu
Predict Reactivity	Ms, Rat, Cow, Dog, Gpig, Pig, Rb
Tested Application	IHC-P, WB
Host	Rabbit
Clonality	Polyclonal
Isotype	IgG
Target Name	KLHL25
Species	Human
Immunogen	Synthetic peptide around the N-terminal region of Human KLHL25. (within the following region: RLYEF SWRMC LVHFE TVRQS EDFNS LSKDT LLDLI SDEL ETEDE RVVFE)
Conjugation	Un-conjugated
Alternate Names	ENC-2; Kelch-like protein 25; ENC2; Ectoderm-neural cortex protein 2

Application Instructions

Predict Reactivity Note	Predicted Homology Based on Immunogen Sequence: Cow: 93%; Dog: 100%; Guinea pig: 93%; Mouse: 86%; Pig: 100%; Rabbit: 86%; Rat: 86%						
Application table	<table><thead><tr><th>Application</th><th>Dilution</th></tr></thead><tbody><tr><td>IHC-P</td><td>Assay-dependent</td></tr><tr><td>WB</td><td>0.3 - 1 µg/ml</td></tr></tbody></table>	Application	Dilution	IHC-P	Assay-dependent	WB	0.3 - 1 µg/ml
Application	Dilution						
IHC-P	Assay-dependent						
WB	0.3 - 1 µg/ml						
Application Note	* The dilutions indicate recommended starting dilutions and the optimal dilutions or concentrations should be determined by the scientist.						
Positive Control	Jurkat						
Observed Size	~ 67 kDa						

Properties

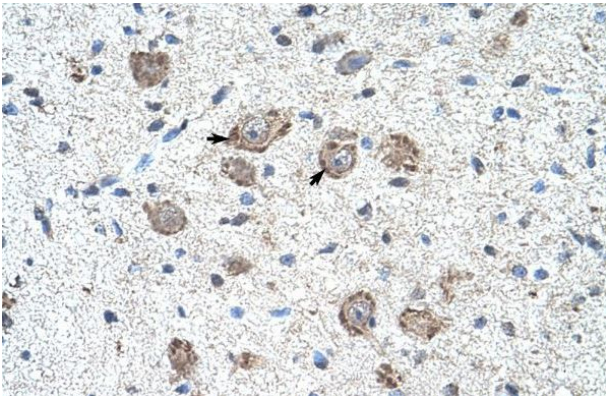
Form	Liquid
Purification	Purification with Protein A.
Buffer	PBS, 0.09% (w/v) Sodium azide and 2% Sucrose.
Preservative	0.09% (w/v) Sodium azide
Stabilizer	2% Sucrose

Concentration	Batch dependent: 0.5 - 1 mg/ml
Storage instruction	For continuous use, store undiluted antibody at 2-8°C for up to a week. For long-term storage, aliquot and store at -20°C or below. Storage in frost free freezers is not recommended. Avoid repeated freeze/thaw cycles. Suggest spin the vial prior to opening. The antibody solution should be gently mixed before use.
Note	For laboratory research only, not for drug, diagnostic or other use.

Bioinformation

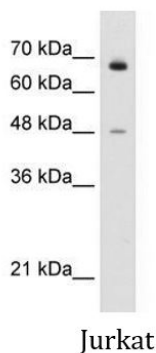
Gene Symbol	KLHL25
Gene Full Name	kelch-like family member 25
Function	Substrate-specific adapter of a BCR (BTB-CUL3-RBX1) E3 ubiquitin ligase complex required for translational homeostasis. The BCR(KLHL25) ubiquitin ligase complex acts by mediating ubiquitination of hypophosphorylated EIF4EBP1 (4E-BP1): ubiquitination and subsequent degradation of hypophosphorylated EIF4EBP1 (4E-BP1) probably serves as a homeostatic mechanism to maintain translation and prevent eIF4E inhibition when eIF4E levels are low. The BCR(KLHL25) complex does not target EIF4EBP1 (4E-BP1) when it is hyperphosphorylated or associated with eIF4E. [UniProt]
Calculated Mw	66 kDa

Images



ARG42145 anti-KLHL25 antibody IHC-P image

Immunohistochemistry: Paraffin-embedded Human brain tissue stained with ARG42145 anti-KLHL25 antibody.



ARG42145 anti-KLHL25 antibody WB image

Western blot: Jurkat cell lysate stained with ARG42145 anti-KLHL25 antibody at 0.3 µg/ml dilution.