

ARG42157 anti-MLC1 antibody

Package: 50 µl
Store at: -20°C

Summary

Product Description	Rabbit Polyclonal antibody recognizes MLC1
Tested Reactivity	Rat
Predict Reactivity	Ms, Cow, Dog, Gpig, Hrs, Rb
Tested Application	ICC/IF, WB
Host	Rabbit
Clonality	Polyclonal
Isotype	IgG
Target Name	MLC1
Species	Human
Immunogen	Synthetic peptide around the middle region of Human MLC1. (within the following region: SDSAN ILDEV PFPAR VLKSY SVVEV IAGIS AVLGG IIALN VDDSV SGPHL)
Conjugation	Un-conjugated
Alternate Names	LVM; MLC; VL; Membrane protein MLC1

Application Instructions

Predict Reactivity Note	Predicted Homology Based on Immunogen Sequence: Cow: 91%; Dog: 86%; Guinea pig: 92%; Horse: 86%; Mouse: 93%; Rabbit: 83%						
Application table	<table> <tr> <th>Application</th><th>Dilution</th></tr> <tr> <td>ICC/IF</td><td>1:50</td></tr> <tr> <td>WB</td><td>1 µg/ml</td></tr> </table>	Application	Dilution	ICC/IF	1:50	WB	1 µg/ml
Application	Dilution						
ICC/IF	1:50						
WB	1 µg/ml						
Application Note	* The dilutions indicate recommended starting dilutions and the optimal dilutions or concentrations should be determined by the scientist.						

Properties

Form	Liquid
Purification	Affinity purified.
Buffer	PBS, 0.09% (w/v) Sodium azide and 2% Sucrose.
Preservative	0.09% (w/v) Sodium azide
Stabilizer	2% Sucrose
Concentration	Batch dependent: 0.5 - 1 mg/ml
Storage instruction	For continuous use, store undiluted antibody at 2-8°C for up to a week. For long-term storage, aliquot and store at -20°C or below. Storage in frost free freezers is not recommended. Avoid repeated freeze/thaw cycles. Suggest spin the vial prior to opening. The antibody solution should be gently mixed

before use.

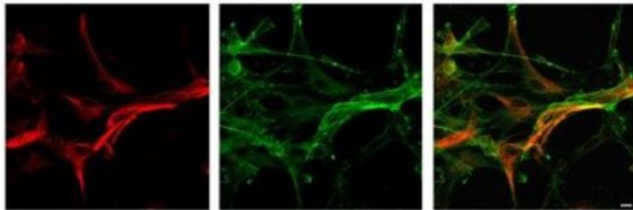
Note

For laboratory research only, not for drug, diagnostic or other use.

Bioinformation

Gene Symbol	MLC1
Gene Full Name	megaloencephalic leukoencephalopathy with subcortical cysts 1
Background	The function of this gene product is unknown; however, homology to other proteins suggests that it may be an integral membrane transporter. Mutations in this gene have been associated with megalencephalic leukoencephalopathy with subcortical cysts, an autosomal recessive neurological disorder. Alternatively spliced transcript variants encoding different isoforms have been identified. [provided by RefSeq, Jul 2008]
Function	Regulates the response of astrocytes to hypo-osmosis by promoting calcium influx. [UniProt]
Calculated Mw	41 kDa
Cellular Localization	Membrane; Multi-pass membrane protein. Cell membrane. Cytoplasm, perinuclear region. Endoplasmic reticulum. [UniProt]

Images



ARG42157 anti-MLC1 antibody ICC/IF image

Immunofluorescence: Rat astrocytes stained with ARG42157 anti-MLC1 antibody at 1:50 dilution.