

## ARG42158 anti-YIPF3 antibody

Package: 50 µg  
Store at: -20°C

### Summary

Product Description	Rabbit Polyclonal antibody recognizes YIPF3
Tested Reactivity	Hu, Ms
Tested Application	ICC/IF, IHC-P, WB
Host	Rabbit
Clonality	Polyclonal
Isotype	IgG
Target Name	YIPF3
Species	Human
Immunogen	Recombinant protein corresponding to aa. 2-148 of Human YIPF3.
Conjugation	Un-conjugated
Alternate Names	Natural killer cell-specific antigen KLIP1; C6orf109; Protein YIPF3; YIP1 family member 3; FinGER3; dJ337H4.3; Killer lineage protein 1; KLIP1

### Application Instructions

Application table	Application	Dilution
	ICC/IF	1:100
	IHC-P	1:100
	WB	3 µg/ml
Application Note	* The dilutions indicate recommended starting dilutions and the optimal dilutions or concentrations should be determined by the scientist.	
Positive Control	Mouse heart, Mouse liver, Mouse brain and Mouse stomach	
Observed Size	~ 39 kDa	

### Properties

Form	Liquid
Purification	Purification with Protein G.
Purity	> 95%
Buffer	0.01M PBS (pH 7.4), 0.03% Proclin 300 and 50% Glycerol.
Preservative	0.03% Proclin 300
Stabilizer	50% Glycerol
Storage instruction	For continuous use, store undiluted antibody at 2-8°C for up to a week. For long-term storage, aliquot and store at -20°C. Storage in frost free freezers is not recommended. Avoid repeated freeze/thaw

cycles. Suggest spin the vial prior to opening. The antibody solution should be gently mixed before use.

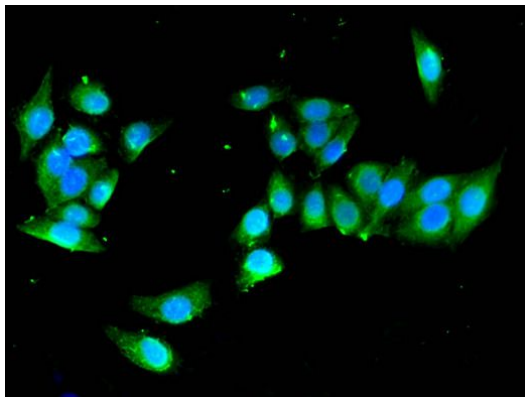
Note

For laboratory research only, not for drug, diagnostic or other use.

## Bioinformation

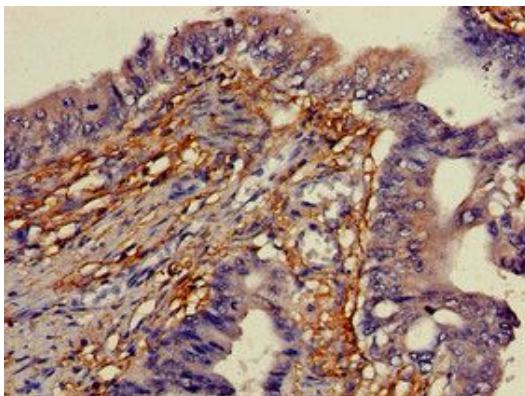
Gene Symbol	YIPF3
Gene Full Name	Yip1 domain family, member 3
Function	Involved in the maintenance of the Golgi structure. May play a role in hematopoiesis. [UniProt]
Calculated Mw	38 kDa
PTM	N-glycosylated in the ER (40 kDa form I), then O-glycosylated in the Golgi apparatus (46 kDa form II), the C-terminal luminal region is later removed in the Golgi apparatus to produce a 36 kDa form III. O-glycosylated with core 1-like and core 2-like glycans. O-glycan heterogeneity at Thr-346: HexNAc (minor), HexHexNAc (major), Hex1HexNAc2 (minor), Hex2HexNAc2 (minor) and dHex1Hex2HexNAc2 (minor). [UniProt]
Cellular Localization	Cell membrane; Multi-pass membrane protein. Cytoplasm. Golgi apparatus, cis-Golgi network membrane; Multi-pass membrane protein. Note=Localization to the cytoplasm or to the cell membrane is developmentally and ontogenetically regulated. [UniProt]

## Images



ARG42158 anti-YIPF3 antibody ICC/IF image

Immunofluorescence: PC3 cells stained with ARG42158 anti-YIPF3 antibody (green) at 1:100 dilution.



ARG42158 anti-YIPF3 antibody IHC-P image

Immunohistochemistry: Paraffin-embedded Human colon cancer tissue stained with ARG42158 anti-YIPF3 antibody at 1:100 dilution.

#### ARG42158 anti-YIPF3 antibody WB image

Western blot: Mouse heart, Mouse liver, Mouse brain and Mouse stomach lysates stained with ARG42158 anti-YIPF3 antibody at 3  $\mu\text{g/ml}$  dilution.

