

ARG42163 anti-YIPF3 antibody

Package: 100 µl
Store at: -20°C

Summary

Product Description	Rabbit Polyclonal antibody recognizes YIPF3
Tested Reactivity	Ms
Tested Application	WB
Host	Rabbit
Clonality	Polyclonal
Isotype	IgG
Target Name	YIPF3
Species	Human
Immunogen	KLH-conjugated synthetic peptide between aa. 292-321 of Human YIPF3.
Conjugation	Un-conjugated
Alternate Names	Natural killer cell-specific antigen KLIP1; C6orf109; Protein YIPF3; YIP1 family member 3; FinGER3; dJ337H4.3; Killer lineage protein 1; KLIP1

Application Instructions

Application table	Application	Dilution
	WB	1:1000
Application Note	* The dilutions indicate recommended starting dilutions and the optimal dilutions or concentrations should be determined by the scientist.	
Positive Control	Mouse liver	
Observed Size	~ 34 kDa	

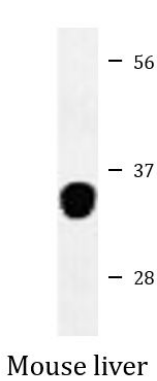
Properties

Form	Liquid
Purification	Purification with Protein A and immunogen peptide.
Buffer	PBS and 0.09% (W/V) Sodium azide.
Preservative	0.09% (W/V) Sodium azide
Storage instruction	For continuous use, store undiluted antibody at 2-8°C for up to a week. For long-term storage, aliquot and store at -20°C or below. Storage in frost free freezers is not recommended. Avoid repeated freeze/thaw cycles. Suggest spin the vial prior to opening. The antibody solution should be gently mixed before use.
Note	For laboratory research only, not for drug, diagnostic or other use.

Bioinformation

Gene Symbol	YIPF3
Gene Full Name	Yip1 domain family, member 3
Function	Involved in the maintenance of the Golgi structure. May play a role in hematopoiesis. [UniProt]
Calculated Mw	38 kDa
PTM	N-glycosylated in the ER (40 kDa form I), then O-glycosylated in the Golgi apparatus (46 kDa form II), the C-terminal luminal region is later removed in the Golgi apparatus to produce a 36 kDa form III. O-glycosylated with core 1-like and core 2-like glycans. O-glycan heterogeneity at Thr-346: HexNAc (minor), HexHexNAc (major), Hex1HexNAc2 (minor), Hex2HexNAc2 (minor) and dHex1Hex2HexNAc2 (minor). [UniProt]
Cellular Localization	Cell membrane; Multi-pass membrane protein. Cytoplasm. Golgi apparatus, cis-Golgi network membrane; Multi-pass membrane protein. Note=Localization to the cytoplasm or to the cell membrane is developmentally and ontogenetically regulated. [UniProt]

Images



ARG42163 anti-YIPF3 antibody WB image

Western blot: 35 µg of Mouse liver lysate stained with ARG42163 anti-YIPF3 antibody.