

ARG42168 anti-MOBKL3 antibody

Package: 100 µl
Store at: -20°C

Summary

| | |
|---------------------|---|
| Product Description | Rabbit Polyclonal antibody recognizes MOBKL3 |
| Tested Reactivity | Hu |
| Tested Application | WB |
| Host | Rabbit |
| Clonality | Polyclonal |
| Isotype | IgG |
| Target Name | MOBKL3 |
| Species | Human |
| Immunogen | KLH-conjugated synthetic peptide between aa. 1-30 of Human MOBKL3. |
| Conjugation | Un-conjugated |
| Alternate Names | Preimplantation protein 3; 2C4D; Mob3; PHOCN; CGI-95; Mps one binder kinase activator-like 3; PREI3; MOB-like protein phocein; MOB3; Class II mMOB1; MOB1; MOBKL3; Mob1 homolog 3 |

Application Instructions

| | | |
|-------------------|--|----------|
| Application table | Application | Dilution |
| | WB | 1:1000 |
| Application Note | * The dilutions indicate recommended starting dilutions and the optimal dilutions or concentrations should be determined by the scientist. | |
| Positive Control | NCI-H460 | |
| Observed Size | ~ 26 kDa | |

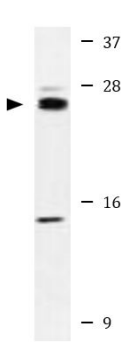
Properties

| | |
|---------------------|--|
| Form | Liquid |
| Purification | Purification with Protein A and immunogen peptide. |
| Buffer | PBS and 0.09% (W/V) Sodium azide. |
| Preservative | 0.09% (W/V) Sodium azide |
| Storage instruction | For continuous use, store undiluted antibody at 2-8°C for up to a week. For long-term storage, aliquot and store at -20°C or below. Storage in frost free freezers is not recommended. Avoid repeated freeze/thaw cycles. Suggest spin the vial prior to opening. The antibody solution should be gently mixed before use. |
| Note | For laboratory research only, not for drug, diagnostic or other use. |

Bioinformation

| | |
|-----------------------|---|
| Gene Symbol | MOB4 |
| Gene Full Name | MOB family member 4, phocein |
| Background | This gene was identified based on its similarity with the mouse counterpart. Studies of the mouse counterpart suggest that the expression of this gene may be regulated during oocyte maturation and preimplantation following zygotic gene activation. Alternatively spliced transcript variants encoding distinct isoforms have been observed. Naturally occurring read-through transcription occurs between this locus and the neighboring locus HSPE1. [provided by RefSeq, Feb 2011] |
| Function | May play a role in membrane trafficking, specifically in membrane budding reactions. [UniProt] |
| Calculated Mw | 26 kDa |
| PTM | Phosphorylated on serine residues. [UniProt] |
| Cellular Localization | Cytoplasm, perinuclear region. Membrane; Peripheral membrane protein. Golgi apparatus, Golgi stack membrane; Peripheral membrane protein. Note=In a perinuclear punctate pattern. Associated with membranes and the Golgi stacks. [UniProt] |

Images



NCI-H460

ARG42168 anti-MOBKL3 antibody WB image

Western blot: 35 µg of NCI-H460 cell lysate stained with ARG42168 anti-MOBKL3 antibody.