

ARG42171 anti-MYL1 antibody

Package: 100 µl
Store at: -20°C

Summary

Product Description	Rabbit Polyclonal antibody recognizes MYL1
Tested Reactivity	Hu, Ms, Rat
Tested Application	FACS, ICC/IF, IHC-P, WB
Host	Rabbit
Clonality	Polyclonal
Isotype	IgG
Target Name	MYL1
Species	Human
Immunogen	KLH-conjugated synthetic peptide between aa. 101-135 of Human MYL1.
Conjugation	Un-conjugated
Alternate Names	Myosin light chain A1/A2; MLC1F/MLC3F; MLC1F; MLC1/MLC3; Myosin light chain alkali 1/2; Myosin light chain 1/3, skeletal muscle isoform; MLC3F

Application Instructions

Application table	Application	Dilution
	FACS	1:25
	ICC/IF	1:25
	IHC-P	1:25
	WB	1:2000
Application Note	IHC-P: Antigen Retrieval: Heat mediation was performed in Citrate buffer (pH 6.0). * The dilutions indicate recommended starting dilutions and the optimal dilutions or concentrations should be determined by the scientist.	
Positive Control	Human heart	
Observed Size	~ 25 kDa	

Properties

Form	Liquid
Purification	Purification with Protein A and immunogen peptide.
Buffer	PBS and 0.09% (W/V) Sodium azide.
Preservative	0.09% (W/V) Sodium azide
Storage instruction	For continuous use, store undiluted antibody at 2-8°C for up to a week. For long-term storage, aliquot and store at -20°C or below. Storage in frost free freezers is not recommended. Avoid repeated freeze/thaw cycles. Suggest spin the vial prior to opening. The antibody solution should be gently mixed

before use.

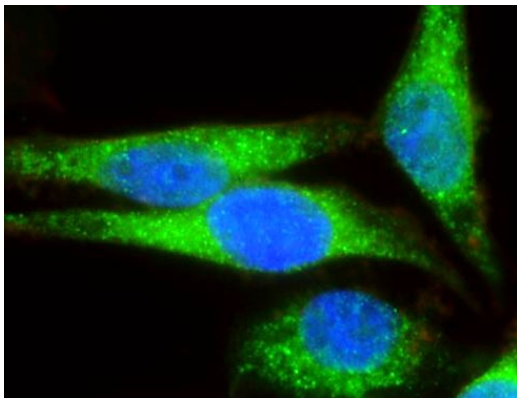
Note

For laboratory research only, not for drug, diagnostic or other use.

Bioinformation

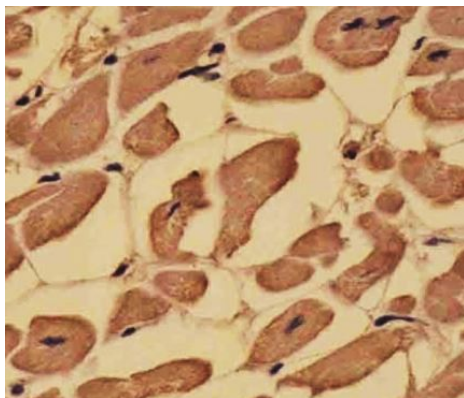
Gene Symbol	MYL1
Gene Full Name	myosin, light chain 1, alkali; skeletal, fast
Background	Myosin is a hexameric ATPase cellular motor protein. It is composed of two heavy chains, two nonphosphorylatable alkali light chains, and two phosphorylatable regulatory light chains. This gene encodes a myosin alkali light chain expressed in fast skeletal muscle. Two transcript variants have been identified for this gene. [provided by RefSeq, Jul 2008]
Function	Non-regulatory myosin light chain required for proper formation and/or maintenance of myofibers, and thus appropriate muscle function. [UniProt]
Calculated Mw	21 kDa
PTM	Isoform MLC3 is acetylated at position 2. [UniProt]

Images



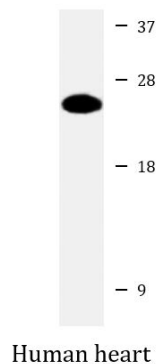
ARG42171 anti-MYL1 antibody ICC/IF image

Immunofluorescence: 4% Paraformaldehyde-fixed and 0.1% Triton X-100 permeabilized HeLa cells stained with ARG42171 anti-MYL1 antibody (green) at 1:25 dilution. DAPI (blue) for nuclear staining.



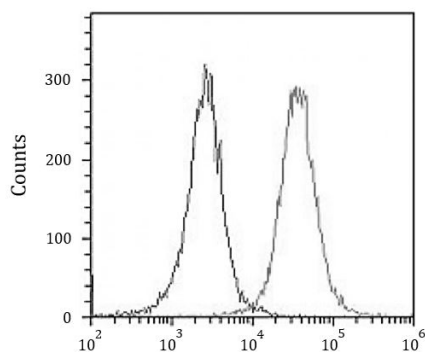
ARG42171 anti-MYL1 antibody IHC-P image

Immunohistochemistry: Paraformaldehyde-fixed and paraffin-embedded Human heart tissue. Tissue was blocked with 3% BSA for 0.5 hour at room temperature. Antigen Retrieval: Heat mediation was performed in Citrate buffer (pH 6.0). Tissue section was stained with ARG42171 anti-MYL1 antibody at 1:25 dilution for 1 hour at 37°C.



ARG42171 anti-MYL1 antibody WB image

Western blot: 20 µg of Human heart lysate stained with ARG42171 anti-MYL1 antibody at 1:2000 dilution.



ARG42171 anti-MYL1 antibody FACS image

Flow Cytometry: HeLa cells were fixed with 2% paraformaldehyde (10 min) and then permeabilized with 90% methanol for 10 min. Cells were then incubated in 2% BSA to block non-specific protein-protein interactions followed by ARG42171 anti-MYL1 antibody (right histogram) at 1:25 dilution for 60 min at 37°C, followed by incubation with DyLight®488 labelled secondary antibody. Isotype control antibody (left histogram) was Rabbit IgG1 (1 µg/ 10^6 cells) used under the same conditions. Acquisition of > 10000 events was performed.