

## ARG42178 anti-RTCB / HSPC117 antibody

Package: 50 µg  
Store at: -20°C

### Summary

Product Description	Goat Polyclonal antibody recognizes RTCB / HSPC117
Tested Reactivity	Hu
Predict Reactivity	Ms, Rat, Cow, Dog, Pig
Tested Application	IHC-P, WB
Host	Goat
Clonality	Polyclonal
Isotype	IgG
Target Name	RTCB / HSPC117
Species	Human
Immunogen	Synthetic peptide around the internal region of Human RTCB / HSPC117. (C-QADPNKVSARAKKR) (NP_055121.1)
Conjugation	Un-conjugated
Alternate Names	EC 6.5.1.3; HSPC117; DJ149A16.6; C22orf28; tRNA-splicing ligase RtcB homolog; FAAP

### Application Instructions

Application table	Application	Dilution
	IHC-P	5 - 10 µg/ml
	WB	0.1 - 0.3 µg/ml
Application Note	WB: Recommend incubate at RT for 1h. IHC-P: Antigen Retrieval: Steam tissue section in Citrate buffer (pH 6.0). * The dilutions indicate recommended starting dilutions and the optimal dilutions or concentrations should be determined by the scientist.	
Positive Control	HeLa	
Observed Size	~ 55 kDa	

### Properties

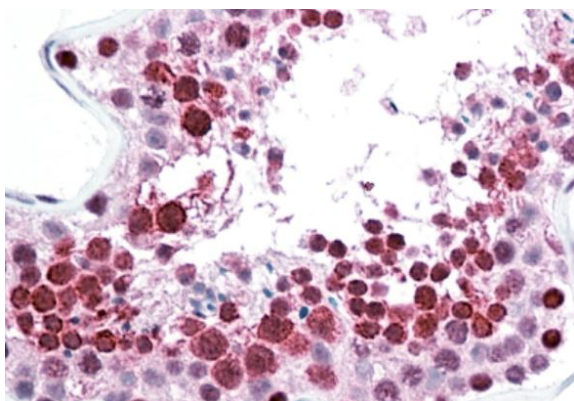
Form	Liquid
Purification	Affinity purified
Buffer	Tris saline (pH 7.3), 0.02% Sodium azide and 0.5% BSA.
Preservative	0.02% Sodium azide
Stabilizer	0.5% BSA
Concentration	0.5 mg/ml

Storage instruction	For continuous use, store undiluted antibody at 2-8°C for up to a week. For long-term storage, aliquot and store at -20°C or below. Storage in frost free freezers is not recommended. Avoid repeated freeze/thaw cycles. Suggest spin the vial prior to opening. The antibody solution should be gently mixed before use.
Note	For laboratory research only, not for drug, diagnostic or other use.

## Bioinformation

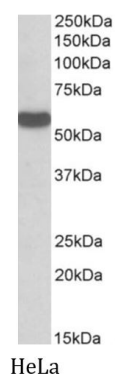
Gene Symbol	RTCB
Gene Full Name	RNA 2',3'-cyclic phosphate and 5'-OH ligase
Function	Catalytic subunit of the tRNA-splicing ligase complex that acts by directly joining spliced tRNA halves to mature-sized tRNAs by incorporating the precursor-derived splice junction phosphate into the mature tRNA as a canonical 3',5'-phosphodiester. May act as an RNA ligase with broad substrate specificity, and may function toward other RNAs. [UniProt]
Calculated Mw	55 kDa
Cellular Localization	Nucleus. Cytoplasm. Note=Enters into the nucleus in case of active transcription while it accumulates in cytosol when transcription level is low. [UniProt]

## Images



ARG42178 anti-RTCB / HSPC117 antibody IHC-P image

Immunohistochemistry: Paraffin-embedded Human testis tissue. Antigen Retrieval: Steam tissue section in Citrate buffer (pH 6.0). The tissue section was stained with ARG42178 anti-RTCB / HSPC117 antibody at 5 µg/ml dilution followed by AP-staining.



ARG42178 anti-RTCB / HSPC117 antibody WB image

Western blot: 35 µg of HeLa cell lysate (in RIPA buffer) stained with ARG42178 anti-RTCB / HSPC117 antibody at 0.3 µg/ml dilution and incubated at RT for 1 hour.