

ARG42200 anti-MYL12 antibody

Package: 100 µl
Store at: -20°C

Summary

Product Description	Rabbit Polyclonal antibody recognizes MYL12
Tested Reactivity	Hu
Tested Application	WB
Specificity	This antibody might react to MYL12A, MYL12B and MYL9 proteins.
Host	Rabbit
Clonality	Polyclonal
Isotype	IgG
Target Name	MYL12
Species	Human
Immunogen	Recombinant fusion protein corresponding to aa. 92-171 of Human MYL12 (NP_006462.1).
Conjugation	Un-conjugated
Alternate Names	MLCB; Myosin RLC; Myosin regulatory light chain 2, nonsarcomeric; Myosin regulatory light chain MRCL3; Myosin regulatory light chain 12A; HEL-S-24; MYL2B; MRCL3; MLC-2B; MRCL3; Epididymis secretory protein Li 24

Application Instructions

Application table	Application	Dilution
	WB	1:500 - 1:2000
Application Note	* The dilutions indicate recommended starting dilutions and the optimal dilutions or concentrations should be determined by the scientist.	
Positive Control	Jurkat	
Observed Size	~ 17 kDa	

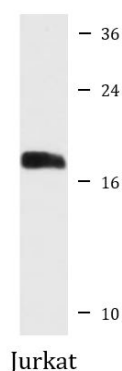
Properties

Form	Liquid
Purification	Affinity purified.
Buffer	PBS (pH 7.3), 0.02% Sodium azide and 50% Glycerol.
Preservative	0.02% Sodium azide
Stabilizer	50% Glycerol
Storage instruction	For continuous use, store undiluted antibody at 2-8°C for up to a week. For long-term storage, aliquot and store at -20°C. Storage in frost free freezers is not recommended. Avoid repeated freeze/thaw cycles. Suggest spin the vial prior to opening. The antibody solution should be gently mixed before use.

Bioinformation

Gene Symbol	MYL12A
Gene Full Name	myosin, light chain 12A, regulatory, non-sarcomeric
Background	This gene encodes a nonsarcomeric myosin regulatory light chain. This protein is activated by phosphorylation and regulates smooth muscle and non-muscle cell contraction. This protein may also be involved in DNA damage repair by sequestering the transcriptional regulator apoptosis-antagonizing transcription factor (AATF)/Che-1 which functions as a repressor of p53-driven apoptosis. Alternate splicing results in multiple transcript variants. A pseudogene of this gene is found on chromosome 8. [provided by RefSeq, Dec 2014]
Function	Myosin regulatory subunit that plays an important role in regulation of both smooth muscle and nonmuscle cell contractile activity via its phosphorylation. Implicated in cytokinesis, receptor capping, and cell locomotion (By similarity). [UniProt]
Calculated Mw	20 kDa
PTM	Phosphorylation increases the actin-activated myosin ATPase activity and thereby regulates the contractile activity. It is required to generate the driving force in the migration of the cells but not necessary for localization of myosin-2 at the leading edge (By similarity). [UniProt]

Images



ARG42200 anti-MYL12 antibody WB image

Western blot: 25 µg of Jurkat cell lysate stained with ARG42200 anti-MYL12 antibody at 1:3000 dilution.