

ARG42211
anti-BLVRA / BVR antibodyPackage: 100 µl
Store at: -20°C

Summary

Product Description	Rabbit Polyclonal antibody recognizes BLVRA / BVR
Tested Reactivity	Hu, Ms
Tested Application	WB
Host	Rabbit
Clonality	Polyclonal
Isotype	IgG
Target Name	BLVRA / BVR
Species	Human
Immunogen	KLH-conjugated synthetic peptide between aa. 61-89 of Human BLVRA.
Conjugation	Un-conjugated
Alternate Names	BVR; BVRA; EC 1.3.1.24; BLVR; Biliverdin-IX alpha-reductase; BVR A; Biliverdin reductase A

Application Instructions

Application table	Application	Dilution
	WB	1:1000
Application Note	* The dilutions indicate recommended starting dilutions and the optimal dilutions or concentrations should be determined by the scientist.	
Positive Control	K562	
Observed Size	~ 38 kDa	

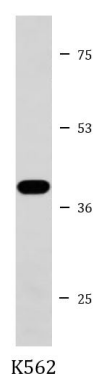
Properties

Form	Liquid
Purification	Purification with Protein A and immunogen peptide.
Buffer	PBS and 0.09% (W/V) Sodium azide.
Preservative	0.09% (W/V) Sodium azide
Storage instruction	For continuous use, store undiluted antibody at 2-8°C for up to a week. For long-term storage, aliquot and store at -20°C or below. Storage in frost free freezers is not recommended. Avoid repeated freeze/thaw cycles. Suggest spin the vial prior to opening. The antibody solution should be gently mixed before use.
Note	For laboratory research only, not for drug, diagnostic or other use.

Bioinformation

Gene Symbol	BLVRA
Gene Full Name	biliverdin reductase A
Background	The protein encoded by this gene belongs to the biliverdin reductase family, members of which catalyze the conversion of biliverdin to bilirubin in the presence of NADPH or NADH. Mutations in this gene are associated with hyperbiliverdinemia. Alternatively spliced transcript variants have been found for this gene. [provided by RefSeq, Dec 2011]
Function	Reduces the gamma-methene bridge of the open tetrapyrrole, biliverdin IX alpha, to bilirubin with the concomitant oxidation of a NADH or NADPH cofactor. [UniProt]
Calculated Mw	33 kDa
Cellular Localization	Cytoplasm. [UniProt]

Images



ARG42211 anti-BLVRA / BVR antibody WB image

Western blot: 35 µg of K562 cell lysate stained with ARG42211 anti-BLVRA / BVR antibody.