

ARG42221 anti-NPTX1 / NP1 antibody

Package: 100 µl
Store at: -20°C

Summary

Product Description	Rabbit Polyclonal antibody recognizes NPTX1 / NP1
Tested Reactivity	Hu, Ms, Rat
Tested Application	IHC-P, WB
Host	Rabbit
Clonality	Polyclonal
Isotype	IgG
Target Name	NPTX1 / NP1
Species	Human
Immunogen	KLH-conjugated synthetic peptide between aa. 322-350 of Human NPTX1 / NP1.
Conjugation	Un-conjugated
Alternate Names	Neuronal pentraxin-1; NP-I; NP1; Neuronal pentraxin I

Application Instructions

Application table	Application	Dilution
	IHC-P	1:25
	WB	1:1000
Application Note	IHC-P: Antigen Retrieval: Heat mediation was performed in Citrate buffer (pH 6.0). * The dilutions indicate recommended starting dilutions and the optimal dilutions or concentrations should be determined by the scientist.	
Positive Control	Human brain	
Observed Size	~ 50 kDa	

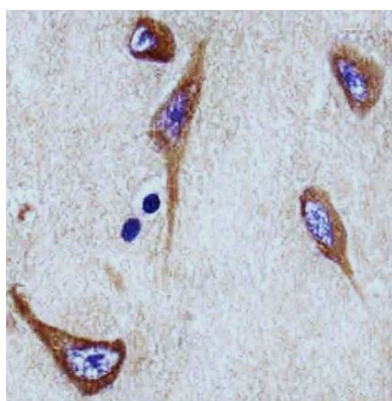
Properties

Form	Liquid
Purification	Purification with Protein A and immunogen peptide.
Buffer	PBS and 0.09% (W/V) Sodium azide.
Preservative	0.09% (W/V) Sodium azide
Storage instruction	For continuous use, store undiluted antibody at 2-8°C for up to a week. For long-term storage, aliquot and store at -20°C or below. Storage in frost free freezers is not recommended. Avoid repeated freeze/thaw cycles. Suggest spin the vial prior to opening. The antibody solution should be gently mixed before use.
Note	For laboratory research only, not for drug, diagnostic or other use.

Bioinformation

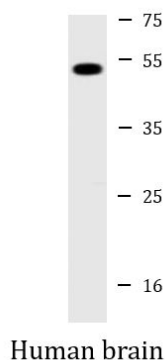
Gene Symbol	NPTX1
Gene Full Name	neuronal pentraxin I
Background	NPTX1 is a member of the neuronal pentraxin gene family. Neuronal pentraxin 1 is similar to the rat NP1 gene which encodes a binding protein for the snake venom toxin taipoxin. Human NPTX1 mRNA is exclusively localized to the nervous system. [provided by RefSeq, Jul 2008]
Function	May be involved in mediating uptake of synaptic material during synapse remodeling or in mediating the synaptic clustering of AMPA glutamate receptors at a subset of excitatory synapses. [UniProt]
Calculated Mw	47 kDa
Cellular Localization	Cytoplasmic vesicle, secretory vesicle. [UniProt]

Images



ARG42221 anti-NPTX1 / NP1 antibody IHC-P image

Immunohistochemistry: Paraformaldehyde-fixed and paraffin-embedded Human brain tissue section. Tissue was blocked with 3% BSA for 0.5 hour at room temperature. Antigen Retrieval: Heat mediation was performed in Citrate buffer (pH 6.0). Samples were stained with ARG42221 anti-NPTX1 / NP1 antibody at 1:25 dilution for 1 hour at 37°C.



ARG42221 anti-NPTX1 / NP1 antibody WB image

Western blot: 20 µg of Human brain lysate stained with ARG42221 anti-NPTX1 / NP1 antibody at 1:2000 dilution.