

ARG42376
anti-TFG / TRK-fused gene protein antibody [TFG-03]Package: 100 µg
Store at: -20°C

Summary

Product Description	Mouse Monoclonal antibody [TFG-03] recognizes TFG / TRK-fused gene protein
Tested Reactivity	Hu
Tested Application	ICC/IF, IP, WB
Specificity	The mouse monoclonal antibody TFG-03 recognizes TFG, an approximately 50 kDa intracellular protein with regulatory functions.
Host	Mouse
Clonality	Monoclonal
Clone	TFG-03
Isotype	IgG2b
Target Name	TFG / TRK-fused gene protein
Species	Human
Immunogen	Human recombinant protein Trx-his-TFG.
Conjugation	Un-conjugated
Alternate Names	TRKT3; HMSNP; SPG57; Protein TFG; TF6; TRK-fused gene protein

Application Instructions

Application table	Application	Dilution
	ICC/IF	Assay-dependent
	IP	Assay-dependent
	WB	Assay-dependent
Application Note	* The dilutions indicate recommended starting dilutions and the optimal dilutions or concentrations should be determined by the scientist.	

Properties

Form	Liquid
Purification	Purification with Protein A.
Buffer	PBS and 15 mM Sodium azide.
Preservative	15 mM Sodium azide
Concentration	1 mg/ml
Storage instruction	For continuous use, store undiluted antibody at 2-8°C for up to a week. For long-term storage, aliquot and store at -20°C or below. Storage in frost free freezers is not recommended. Avoid repeated freeze/thaw cycles. Suggest spin the vial prior to opening. The antibody solution should be gently mixed before use.

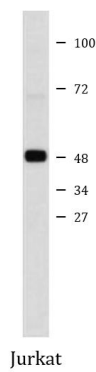
Note

For laboratory research only, not for drug, diagnostic or other use.

Bioinformation

Gene Symbol	TFG
Gene Full Name	TRK-fused gene
Background	There are several documented fusion oncoproteins encoded partially by this gene. This gene also participates in several oncogenic rearrangements resulting in anaplastic lymphoma and mixoid chondrosarcoma, and may play a role in the NF-kappaB pathway. Multiple transcript variants have been found for this gene. [provided by RefSeq, Sep 2010]
Function	Plays a role in the normal dynamic function of the endoplasmic reticulum (ER) and its associated microtubules (PubMed:23479643, PubMed:27813252). Required for secretory cargo traffic from the endoplasmic reticulum to the Golgi apparatus (PubMed:21478858). [UniProt]
Calculated Mw	43 kDa
Cellular Localization	Endoplasmic reticulum. Note=Localizes to endoplasmic reticulum exit site (ERES) (PubMed:27813252). [UniProt]

Images



ARG42376 anti-TFG / TRK-fused gene protein antibody [TFG-03] WB image

Western blot: Jurkat cell lysate stained with ARG42376 anti-TFG / TRK-fused gene protein antibody [TFG-03].