

ARG42399 Mouse anti-Human Kappa Light Chain antibody [TB28-2] (PE)

Package: 50 tests
Store at: 4°C

Summary

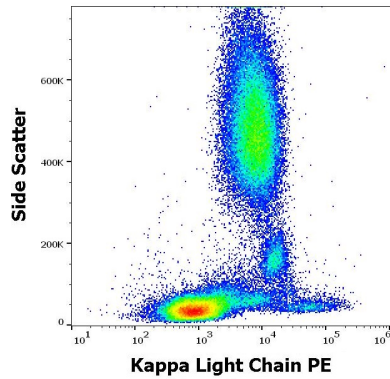
Product Description	PE-conjugated Mouse Monoclonal antibody [TB28-2] recognizes Human Kappa Light Chain
Tested Reactivity	Hu
Tested Application	FACS
Specificity	The antibody TB28-2 recognizes human Ig kappa light chains of both secreted and cell surface immunoglobulin. It detects also free kappa light chains.
Host	Mouse
Clonality	Monoclonal
Clone	TB28-2
Isotype	IgG1, kappa
Target Name	Kappa Light Chain
Species	Human
Immunogen	Human IgG-kappa myeloma protein.
Conjugation	PE

Application Instructions

Application table	Application	Dilution
	FACS	10 µl / 100 µl of whole blood or 10 ⁶ cells
Application Note	* The dilutions indicate recommended starting dilutions and the optimal dilutions or concentrations should be determined by the scientist.	

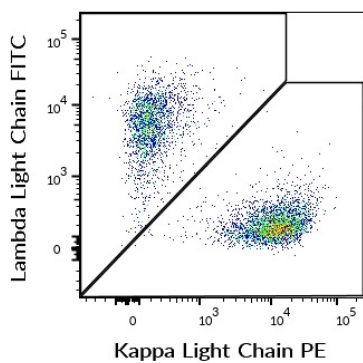
Properties

Form	Liquid
Purification	Purified
Buffer	PBS and 15 mM Sodium azide.
Preservative	15 mM Sodium azide
Storage instruction	Aliquot and store in the dark at 2-8°C. Keep protected from prolonged exposure to light. Avoid repeated freeze/thaw cycles. Suggest spin the vial prior to opening. The antibody solution should be gently mixed before use.
Note	For laboratory research only, not for drug, diagnostic or other use.



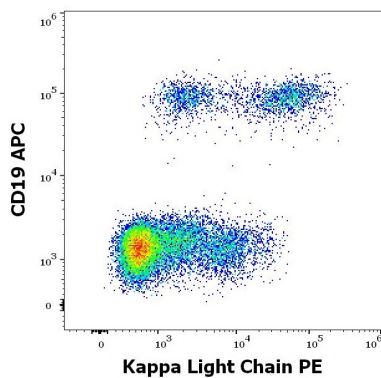
ARG42399 Mouse anti-Human Kappa Light Chain antibody [TB28-2] (PE) FACS image

Flow Cytometry: Human peripheral whole blood stained with ARG42399 Mouse anti-Human Kappa Light Chain antibody [TB28-2] (PE) at 10 μ l / 100 μ l of peripheral whole blood.



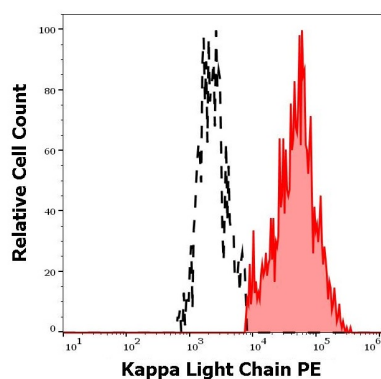
ARG42399 Mouse anti-Human Kappa Light Chain antibody [TB28-2] (PE) FACS image

Flow Cytometry: Human CD19 positive B cells stained with ARG42399 Mouse anti-Human Kappa Light Chain antibody [TB28-2] (PE) at 5 μ g/ml dilution and co-stained with [ARG42396](#) Mouse anti-Human Lambda Light Chain antibody [1-155-2] (FITC) at 5 μ g/ml dilution.



ARG42399 Mouse anti-Human Kappa Light Chain antibody [TB28-2] (PE) FACS image

Flow Cytometry: Human lymphocytes stained with ARG42399 Mouse anti-Human Kappa Light Chain antibody [TB28-2] (PE) at 10 μ l / 100 μ l of peripheral whole blood and co-stained with [ARG53782](#) anti-CD19 antibody [LT19] (APC) at 10 μ l / 100 μ l of peripheral whole blood.



ARG42399 Mouse anti-Human Kappa Light Chain antibody [TB28-2] (PE) FACS image

Flow Cytometry: Separation of Human Ig Lambda Kappa Chain positive B cells (red-filled) from Ig Kappa Light Chain negative B cells (black-dashed). Human peripheral whole blood stained with ARG42399 Mouse anti-Human Kappa Light Chain antibody [TB28-2] (PE) at 10 μ l / 100 μ l of peripheral whole blood.