

ARG42482 anti-PYCR1 antibody

Package: 100 µl
Store at: -20°C

Summary

Product Description	Rabbit Polyclonal antibody recognizes PYCR1
Tested Reactivity	Hu
Tested Application	FACS, IHC-P, WB
Host	Rabbit
Clonality	Polyclonal
Isotype	IgG
Target Name	PYCR1
Species	Human
Immunogen	KLH-conjugated synthetic peptide between aa. 291-319 of Human PYCR1.
Conjugation	Un-conjugated
Alternate Names	PIG45; EC 1.5.1.2; P5CR 1; Pyrroline-5-carboxylate reductase 1, mitochondrial; PRO3; P5C reductase 1; P5C; ARCL3B; P5CR; ARCL2B; PP222; PYCR

Application Instructions

Application table	Application	Dilution
	FACS	1:10 - 1:50
	IHC-P	1:50 - 1:100
	WB	1:1000
Application Note	* The dilutions indicate recommended starting dilutions and the optimal dilutions or concentrations should be determined by the scientist.	
Positive Control	WiDr	
Observed Size	~ 33 kDa	

Properties

Form	Liquid
Purification	Purification with Protein A and immunogen peptide.
Buffer	PBS and 0.09% (W/V) Sodium azide.
Preservative	0.09% (W/V) Sodium azide.
Storage instruction	For continuous use, store undiluted antibody at 2-8°C for up to a week. For long-term storage, aliquot and store at -20°C or below. Storage in frost free freezers is not recommended. Avoid repeated freeze/thaw cycles. Suggest spin the vial prior to opening. The antibody solution should be gently mixed before use.

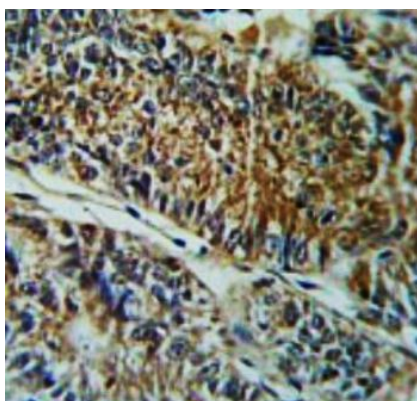
Note

For laboratory research only, not for drug, diagnostic or other use.

Bioinformation

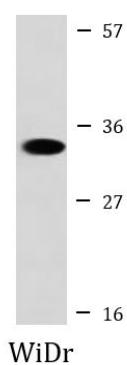
Gene Symbol	PYCR1
Gene Full Name	pyrroline-5-carboxylate reductase 1
Background	This gene encodes an enzyme that catalyzes the NAD(P)H-dependent conversion of pyrroline-5-carboxylate to proline. This enzyme may also play a physiologic role in the generation of NADP(+) in some cell types. The protein forms a homopolymer and localizes to the mitochondrion. Alternative splicing results in multiple transcript variants. [provided by RefSeq, Aug 2013]
Function	Housekeeping enzyme that catalyzes the last step in proline biosynthesis. Can utilize both NAD and NADP, but has higher affinity for NAD. Involved in the cellular response to oxidative stress. [UniProt]
Calculated Mw	33 kDa
Cellular Localization	Mitochondrion. [UniProt]

Images



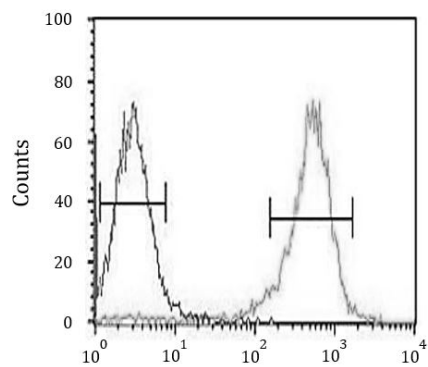
ARG42482 anti-PYCR1 antibody IHC-P image

Immunohistochemistry: Formalin-fixed and paraffin-embedded Human colon carcinoma tissue stained with ARG42482 anti-PYCR1 antibody.



ARG42482 anti-PYCR1 antibody WB image

Western blot: 35 µg of WiDr cell lysate stained with ARG42482 anti-PYCR1 antibody.



ARG42482 anti-PYCR1 antibody FACS image

Flow Cytometry: HepG2 cells stained with ARG42482 anti-PYCR1 antibody (right histogram) or without primary antibody as control (left histogram), followed by incubation with FITC labelled secondary antibody.