

## ARG42501 anti-N Cadherin antibody

Package: 100 µg  
Store at: -20°C

### Summary

Product Description	Goat Polyclonal antibody recognizes N Cadherin
Tested Reactivity	Hu, Ms, Rat, Dog, Mk
Tested Application	ICC/IF, WB
Host	Goat
Clonality	Polyclonal
Isotype	IgG
Target Name	N Cadherin
Species	Human
Immunogen	Purified recombinant peptide within aa. 850 to the C-terminus of Human N Cadherin.
Conjugation	Un-conjugated
Alternate Names	Neural cadherin; N-cadherin; CDw325; CDHN; CD antigen CD325; NCAD; Cadherin-2; CD325

### Application Instructions

Application table	Application	Dilution
	ICC/IF	1:25 - 1:250
	WB	1:500 - 1:2000
Application Note	* The dilutions indicate recommended starting dilutions and the optimal dilutions or concentrations should be determined by the scientist.	
Positive Control	HeLa and Huh7	
Observed Size	~ 130 kDa	

### Properties

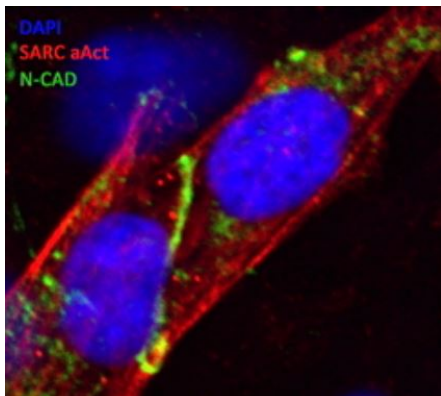
Form	Liquid
Purification	Affinity purification with immunogen.
Buffer	PBS, 0.05% Sodium azide and 20% Glycerol.
Preservative	0.05% Sodium azide
Stabilizer	20% Glycerol
Concentration	3 mg/ml
Storage instruction	For continuous use, store undiluted antibody at 2-8°C for up to a week. For long-term storage, aliquot and store at -20°C. Storage in frost free freezers is not recommended. Avoid repeated freeze/thaw cycles. Suggest spin the vial prior to opening. The antibody solution should be gently mixed before use.

## Bioinformation

---

Gene Symbol	CDH2
Gene Full Name	cadherin 2, type 1, N-cadherin (neuronal)
Background	This gene encodes a classical cadherin and member of the cadherin superfamily. Alternative splicing results in multiple transcript variants, at least one of which encodes a preproprotein is proteolytically processed to generate a calcium-dependent cell adhesion molecule and glycoprotein. This protein plays a role in the establishment of left-right asymmetry, development of the nervous system and the formation of cartilage and bone. [provided by RefSeq, Nov 2015]
Function	Calcium-dependent cell adhesion protein; preferentially mediates homotypic cell-cell adhesion by dimerization with a CDH2 chain from another cell. Cadherins may thus contribute to the sorting of heterogeneous cell types. Acts as a regulator of neural stem cells quiescence by mediating anchorage of neural stem cells to ependymocytes in the adult subependymal zone: upon cleavage by MMP24, CDH2-mediated anchorage is affected, leading to modulate neural stem cell quiescence. CDH2 may be involved in neuronal recognition mechanism. In hippocampal neurons, may regulate dendritic spine density. [UniProt]
Calculated Mw	100 kDa
PTM	<p>Cleaved by MMP24. Ectodomain cleavage leads to the generation of a soluble 90 kDa amino-terminal soluble fragment and a 45 kDa membrane-bound carboxy-terminal fragment 1 (CTF1), which is further cleaved by gamma-secretase into a 35 kDa. Cleavage in neural stem cells by MMP24 affects CDH2-mediated anchorage of neural stem cells to ependymocytes in the adult subependymal zone, leading to modulate neural stem cell quiescence (By similarity).</p> <p>May be phosphorylated by OBSCN. [UniProt]</p>
Cellular Localization	Cell membrane; Single-pass type I membrane protein. Cell membrane, sarcolemma. Cell junction. Cell surface. Note=Colocalizes with TMEM65 at the intercalated disk in cardiomyocytes. Colocalizes with OBSCN at the intercalated disk and at sarcolemma in cardiomyocytes. [UniProt]

## Images



ARG42501 anti-N Cadherin antibody ICC/IF image

Immunofluorescence: Methanol-fixed Human iPS-derived cardiomyocytes stained with ARG42501 anti-N Cadherin antibody (green). Sarcomeric alpha Actinin staining (red). DAPI (blue) for nuclear staining.

ARG42501 anti-N Cadherin antibody WB image

Western blot: 100 µg of HeLa and Huh7 cell lysates stained with ARG42501 anti-N Cadherin antibody at 1:500 dilution.

