

## ARG42506 anti-groEL antibody

Package: 100 µg  
Store at: -20°C

### Summary

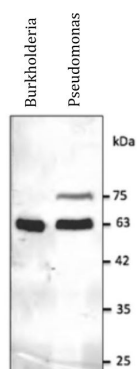
Product Description	Goat Polyclonal antibody recognizes groEL
Tested Reactivity	Bacteria
Tested Application	WB
Specificity	The antibody reacts with Burkholderia and other related species.
Host	Goat
Clonality	Polyclonal
Isotype	IgG
Target Name	groEL
Species	Bacteria
Immunogen	Purified recombinant peptide within aa. 400 to the C-terminus of Burkholderia groEL.
Conjugation	Un-conjugated

### Application Instructions

Application table	Application	Dilution
	WB	1:500 - 1:5000
Application Note	* The dilutions indicate recommended starting dilutions and the optimal dilutions or concentrations should be determined by the scientist.	
Observed Size	~ 63 kDa	

### Properties

Form	Liquid
Purification	Affinity purification with immunogen.
Buffer	PBS, 0.05% Sodium azide and 20% Glycerol.
Preservative	0.05% Sodium azide
Stabilizer	20% Glycerol
Concentration	3 mg/ml
Storage instruction	For continuous use, store undiluted antibody at 2-8°C for up to a week. For long-term storage, aliquot and store at -20°C. Storage in frost free freezers is not recommended. Avoid repeated freeze/thaw cycles. Suggest spin the vial prior to opening. The antibody solution should be gently mixed before use.
Note	For laboratory research only, not for drug, diagnostic or other use.



### ARG42506 anti-groEL antibody WB image

Western blot: 50-100 µg of Burkholderia and Pseudomonas total protein stained with ARG42506 anti-groEL antibody at 1:2500 dilution.