

ARG42552 anti-CREB3L2 / BBF2H7 antibody

Package: 100 µl
Store at: -20°C

Summary

Product Description	Rabbit Polyclonal antibody recognizes CREB3L2 / BBF2H7
Tested Reactivity	Hu, Ms
Tested Application	ICC/IF, IHC-P, WB
Host	Rabbit
Clonality	Polyclonal
Isotype	IgG
Target Name	CREB3L2 / BBF2H7
Species	Human
Immunogen	KLH-conjugated synthetic peptide between aa. 490-517 of Human CREB3L2 / BBF2H7.
Conjugation	Un-conjugated
Alternate Names	Cyclic AMP-responsive element-binding protein 3-like protein 2; BBF2 human homolog on chromosome 7; BBF2H7; cAMP-responsive element-binding protein 3-like protein 2

Application Instructions

Application table	Application	Dilution
	ICC/IF	Assay-dependent
	IHC-P	Assay-dependent
	WB	1:1000
Application Note	* The dilutions indicate recommended starting dilutions and the optimal dilutions or concentrations should be determined by the scientist.	
Positive Control	Jurkat and Mouse lung	
Observed Size	~ 57 kDa	

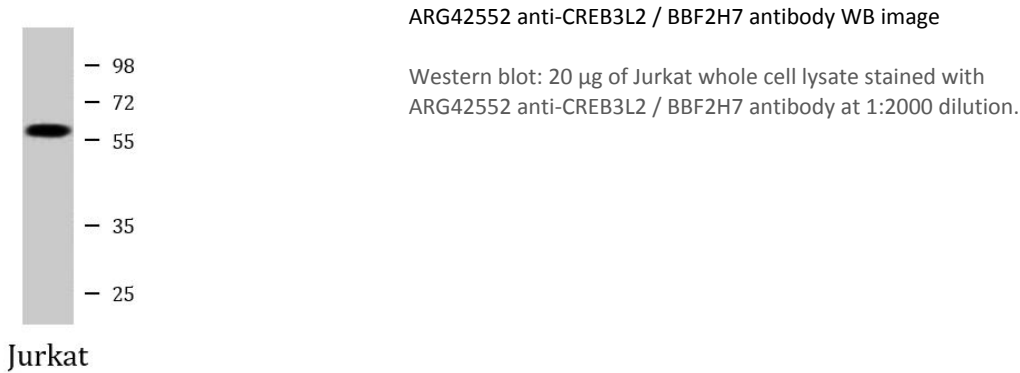
Properties

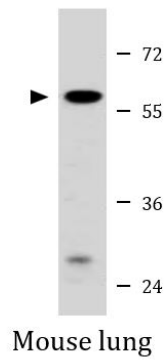
Form	Liquid
Purification	Purification with Protein A and immunogen peptide.
Buffer	PBS and 0.09% (W/V) Sodium azide.
Preservative	0.09% (W/V) Sodium azide
Storage instruction	For continuous use, store undiluted antibody at 2-8°C for up to a week. For long-term storage, aliquot and store at -20°C or below. Storage in frost free freezers is not recommended. Avoid repeated freeze/thaw cycles. Suggest spin the vial prior to opening. The antibody solution should be gently mixed before use.

Bioinformation

Gene Symbol	CREB3L2
Gene Full Name	cAMP responsive element binding protein 3-like 2
Background	This gene encodes a member of the oas bZIP transcription factor family. Members of this family can dimerize but form homodimers only. The encoded protein is a transcriptional activator. Translocations between this gene on chromosome 7 and the gene fused in sarcoma on chromosome 16 can be found in some tumors. Multiple transcript variants encoding different isoforms have been found for this gene. [provided by RefSeq, Dec 2011]
Function	Transcription factor involved in unfolded protein response (UPR). In the absence of endoplasmic reticulum (ER) stress, inserted into ER membranes, with N-terminal DNA-binding and transcription activation domains oriented toward the cytosolic face of the membrane. In response to ER stress, transported to the Golgi, where it is cleaved in a site-specific manner by resident proteases S1P/MBTPS1 and S2P/MBTPS2. The released N-terminal cytosolic domain is translocated to the nucleus to effect transcription of specific target genes. Plays a critical role in chondrogenesis by activating the transcription of SEC23A, which promotes the transport and secretion of cartilage matrix proteins, and possibly that of ER biogenesis-related genes (By similarity). In a neuroblastoma cell line, protects cells from ER stress-induced death (PubMed:17178827). In vitro activates transcription of target genes via direct binding to the CRE site (PubMed:17178827). [UniProt]
Calculated Mw	57 kDa
PTM	Upon ER stress, translocated to the Golgi apparatus, where it is processed by regulated intramembrane proteolysis (RIP) to release the cytosol-facing N-terminal transcription factor domain. The cleavage is performed sequentially by site-1 and site-2 proteases (S1P/MBTPS1 and S2P/MBTPS2). N-glycosylated. Ubiquitinated by HRD1/SYVN1; undergoes 'Lys-48'-linked ubiquitination, followed by rapid proteasomal degradation under normal conditions. Upon ER stress, SYVN1 E3 ubiquitin-protein ligase dissociates from its substrate, ubiquitination does not occur and CREB3L2 is stabilized. [UniProt]
Cellular Localization	Endoplasmic reticulum membrane; Single-pass type II membrane protein. Note=ER membrane resident protein. Upon ER stress, translocated to the Golgi apparatus where it is cleaved. The cytosolic N-terminal fragment (processed cyclic AMP-responsive element-binding protein 3-like protein 1) is transported into the nucleus. Processed cyclic AMP-responsive element-binding protein 3-like protein 2: Nucleus. Note=Upon ER stress, translocated into the nucleus. [UniProt]

Images





ARG42552 anti-CREB3L2 / BBF2H7 antibody WB image

Western blot: 35 µg of Mouse lung lysate stained with ARG42552 anti-CREB3L2 / BBF2H7 antibody.