

ARG42563 anti-RAB27A antibody

Package: 50 µl
Store at: -20°C

Summary

Product Description	Rabbit Polyclonal antibody recognizes RAB27A
Tested Reactivity	Hu, Ms
Tested Application	ICC/IF, WB
Host	Rabbit
Clonality	Polyclonal
Isotype	IgG
Target Name	RAB27A
Species	Human
Immunogen	Recombinant fusion protein corresponding to aa. 1-221 of Human RAB27A (NP_899057.1).
Conjugation	Un-conjugated
Alternate Names	GS2; GTP-binding protein Ram; RAB27; RAM; Ras-related protein Rab-27A; HsT18676; Rab-27

Application Instructions

Application table	Application	Dilution
	ICC/IF	1:50 - 1:200
	WB	1:500 - 1:2000
Application Note	* The dilutions indicate recommended starting dilutions and the optimal dilutions or concentrations should be determined by the scientist.	
Positive Control	U-937	
Observed Size	~ 26 kDa	

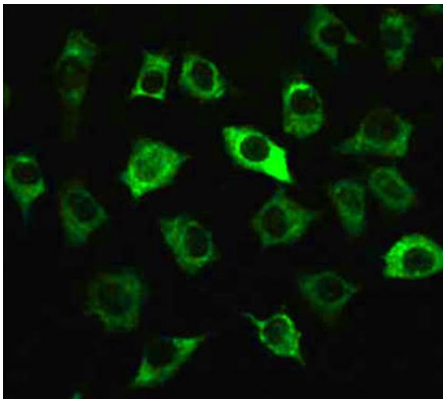
Properties

Form	Liquid
Purification	Affinity purified.
Buffer	PBS (pH 7.3), 0.02% Sodium azide and 50% Glycerol.
Preservative	0.02% Sodium azide
Stabilizer	50% Glycerol
Storage instruction	For continuous use, store undiluted antibody at 2-8°C for up to a week. For long-term storage, aliquot and store at -20°C. Storage in frost free freezers is not recommended. Avoid repeated freeze/thaw cycles. Suggest spin the vial prior to opening. The antibody solution should be gently mixed before use.
Note	For laboratory research only, not for drug, diagnostic or other use.

Bioinformation

Gene Symbol	RAB27A
Gene Full Name	RAB27A, member RAS oncogene family
Background	The protein encoded by this gene belongs to the small GTPase superfamily, Rab family. The protein is membrane-bound and may be involved in protein transport and small GTPase mediated signal transduction. Mutations in this gene are associated with Griscelli syndrome type 2. Alternative splicing occurs at this locus and four transcript variants encoding the same protein have been identified. [provided by RefSeq, Jul 2008]
Function	Small GTPase which cycles between active GTP-bound and inactive GDP-bound states. In its active state, binds to a variety of effector proteins to regulate homeostasis of late endocytic pathway, including endosomal positioning, maturation and secretion (PubMed:30771381). Plays a role in cytotoxic granule exocytosis in lymphocytes. Required for both granule maturation and granule docking and priming at the immunologic synapse. [UniProt]
Calculated Mw	25 kDa
Cellular Localization	Membrane; Lipid-anchor. Melanosome. Late endosome. Lysosome. Note=Identified by mass spectrometry in melanosome fractions from stage I to stage IV (PubMed:12643545, PubMed:17081065). Localizes to endosomal exocytic vesicles (PubMed:17237785). [UniProt]

Images



ARG42563 anti-RAB27A antibody ICC/IF image

Immunofluorescence: L929 cells stained with ARG42563 anti-RAB27A antibody at 1:100 dilution.



ARG42563 anti-RAB27A antibody WB image

Western blot: 25 µg of U-937 cells stained with ARG42563 anti-RAB27A antibody at 1:1000 dilution.