

ARG42578
anti-IFN alpha 2 antibodyPackage: 100 µl
Store at: -20°C

Summary

Product Description	Rabbit Polyclonal antibody recognizes IFN alpha 2
Tested Reactivity	Hu, Ms
Tested Application	WB
Host	Rabbit
Clonality	Polyclonal
Isotype	IgG
Target Name	IFN alpha 2
Species	Human
Immunogen	Recombinant Protein of Human IFN alpha 2.
Conjugation	Un-conjugated
Alternate Names	IFNA2B; IFN-alphaA; INFA2; IFN-alpha-2; Interferon alpha-2; IFNA; Interferon alpha-A; LeIF A

Application Instructions

Application table	Application	Dilution
	WB	1:500 - 1:2000
Application Note	* The dilutions indicate recommended starting dilutions and the optimal dilutions or concentrations should be determined by the scientist.	
Positive Control	U-937	
Observed Size	~ 15 kDa	

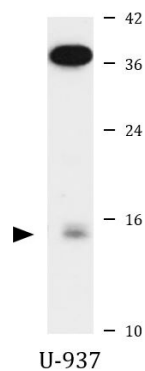
Properties

Form	Liquid
Purification	Affinity purified.
Buffer	PBS (pH 7.3), 0.02% Sodium azide and 50% Glycerol.
Preservative	0.02% Sodium azide
Stabilizer	50% Glycerol
Storage instruction	For continuous use, store undiluted antibody at 2-8°C for up to a week. For long-term storage, aliquot and store at -20°C. Storage in frost free freezers is not recommended. Avoid repeated freeze/thaw cycles. Suggest spin the vial prior to opening. The antibody solution should be gently mixed before use.
Note	For laboratory research only, not for drug, diagnostic or other use.

Bioinformation

Gene Symbol	IFNA2
Gene Full Name	interferon, alpha 2
Background	This gene is a member of the alpha interferon gene cluster on chromosome 9. The encoded protein is a cytokine produced in response to viral infection. Use of the recombinant form of this protein has been shown to be effective in reducing the symptoms and duration of the common cold. [provided by RefSeq, Jun 2011]
Function	Produced by macrophages, IFN-alpha have antiviral activities. [UniProt]
Calculated Mw	22 kDa
Cellular Localization	Secreted. [UniProt]

Images



ARG42578 anti-IFN alpha 2 antibody WB image

Western blot: 25 µg of U-937 cell lysate stained with ARG42578 anti-IFN alpha 2 antibody at 1:1000 dilution.