

## ARG42598 anti-NAA15 / NARG1 antibody

Package: 50 µl  
Store at: -20°C

### Summary

Product Description	Rabbit Polyclonal antibody recognizes NAA15 / NARG1
Tested Reactivity	Hu, Ms, Rat
Tested Application	WB
Host	Rabbit
Clonality	Polyclonal
Isotype	IgG
Target Name	NAA15 / NARG1
Species	Human
Immunogen	Synthetic peptide of Human NAA15 / NARG1.
Conjugation	Un-conjugated
Alternate Names	Protein tubedown-1; N-terminal acetyltransferase; Tbdn100; NARG1; TBDN; TBDN100; NATH; N-alpha-acetyltransferase 15, NatA auxiliary subunit; NMDA receptor-regulated protein 1; Ga19; Gastric cancer antigen Ga19; NAT1P

### Application Instructions

Application table	<table> <tr> <th>Application</th><th>Dilution</th></tr> <tr> <td>WB</td><td>1:500 - 1:1000</td></tr> </table>	Application	Dilution	WB	1:500 - 1:1000
Application	Dilution				
WB	1:500 - 1:1000				
Application Note	* The dilutions indicate recommended starting dilutions and the optimal dilutions or concentrations should be determined by the scientist.				
Positive Control	SCC-7, A375, Mouse eye and Rat testis.				
Observed Size	~ 100 kDa				

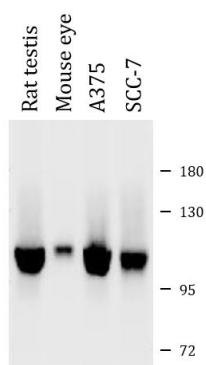
### Properties

Form	Liquid
Purification	Affinity purification with immunogen.
Purity	> 95% (by SDS-PAGE)
Buffer	PBS (pH 7.2), 0.02% Sodium azide and 50% Glycerol.
Preservative	0.02% Sodium azide
Stabilizer	50% Glycerol
Concentration	1 mg/ml
Storage instruction	For continuous use, store undiluted antibody at 2-8°C for up to a week. For long-term storage, aliquot and store at -20°C. Storage in frost free freezers is not recommended. Avoid repeated freeze/thaw cycles. Suggest spin the vial prior to opening. The antibody solution should be gently mixed before use.

## Bioinformation

Gene Symbol	NAA15
Gene Full Name	N(alpha)-acetyltransferase 15, NatA auxiliary subunit
Background	N-alpha-acetylation is among the most common post-translational protein modifications in eukaryotic cells. This process involves the transfer of an acetyl group from acetyl-coenzyme A to the alpha-amino group on a nascent polypeptide and is essential for normal cell function. This gene encodes the auxillary subunit of the N-terminal acetyltransferase A (NatA) complex. [provided by RefSeq, Jan 2017]
Function	Auxillary subunit of the N-terminal acetyltransferase A (NatA) complex which displays alpha (N-terminal) acetyltransferase activity. The NAT activity may be important for vascular, hematopoietic and neuronal growth and development. Required to control retinal neovascularization in adult ocular endothelial cells. In complex with XRCC6 and XRCC5 (Ku80), up-regulates transcription from the osteocalcin promoter. [UniProt]
Calculated Mw	101 kDa
PTM	Cleaved by caspases during apoptosis, resulting in a stable 35 kDa fragment. [UniProt]
Cellular Localization	Cytoplasm. Nucleus. Note=Mainly cytoplasmic, nuclear in some cases. Present in the free cytosolic and cytoskeleton-bound polysomes, but not in the membrane-bound polysomes. [UniProt]

## Images



ARG42598 anti-NAA15 / NARG1 antibody WB image

Western blot: 40 µg of Rat testis, Mouse eye, A375 and SCC-7 whole cell lysates stained with ARG42598 anti-NAA15 / NARG1 antibody at 1:500 dilution.