

ARG42641 anti-ENT1 antibody

Package: 100 µl
Store at: -20°C

Summary

Product Description	Rabbit Polyclonal antibody recognizes ENT1
Tested Reactivity	Hu, Ms
Predict Reactivity	Rat
Tested Application	FACS, IHC-P, WB
Host	Rabbit
Clonality	Polyclonal
Isotype	IgG
Target Name	ENT1
Species	Human
Immunogen	KLH-conjugated synthetic peptide between aa. 402-431 of Human ENT1.
Conjugation	Un-conjugated
Alternate Names	Solute carrier family 29 member 1; Equilibrative NBMPR-sensitive nucleoside transporter; Equilibrative nucleoside transporter 1; ENT1; Equilibrative nitrobenzylmercaptopyrine riboside-sensitive nucleoside transporter; Nucleoside transporter, es-type

Application Instructions

Application table	Application	Dilution
	FACS	1:25
	IHC-P	1:500
	WB	1:1000
Application Note	* The dilutions indicate recommended starting dilutions and the optimal dilutions or concentrations should be determined by the scientist.	
Positive Control	Human breast and Mouse liver	
Observed Size	~ 50 kDa	

Properties

Form	Liquid
Purification	Purification with Protein A and immunogen peptide.
Buffer	PBS and 0.09% (W/V) Sodium azide.
Preservative	0.09% (W/V) Sodium azide.
Storage instruction	For continuous use, store undiluted antibody at 2-8°C for up to a week. For long-term storage, aliquot and store at -20°C or below. Storage in frost free freezers is not recommended. Avoid repeated freeze/thaw cycles. Suggest spin the vial prior to opening. The antibody solution should be gently mixed

before use.

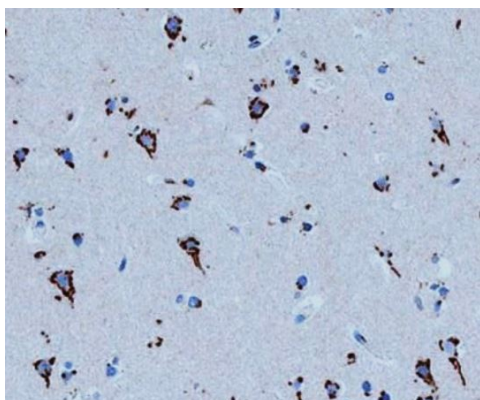
Note

For laboratory research only, not for drug, diagnostic or other use.

Bioinformation

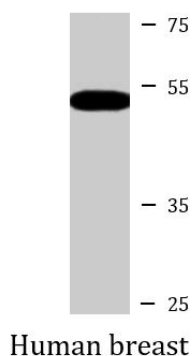
Gene Symbol	SLC29A1
Gene Full Name	solute carrier family 29 (equilibrative nucleoside transporter), member 1
Background	This gene is a member of the equilibrative nucleoside transporter family. The gene encodes a transmembrane glycoprotein that localizes to the plasma and mitochondrial membranes and mediates the cellular uptake of nucleosides from the surrounding medium. The protein is categorized as an equilibrative (as opposed to concentrative) transporter that is sensitive to inhibition by nitrobenzylthioinosine (NBMPR). Nucleoside transporters are required for nucleotide synthesis in cells that lack de novo nucleoside synthesis pathways, and are also necessary for the uptake of cytotoxic nucleosides used for cancer and viral chemotherapies. Multiple alternatively spliced variants, encoding the same protein, have been found for this gene. [provided by RefSeq, Jul 2008]
Function	Mediates both influx and efflux of nucleosides across the membrane (equilibrative transporter). It is sensitive (ES) to low concentrations of the inhibitor nitrobenzylmercaptapurine riboside (NBMPR) and is sodium-independent. It has a higher affinity for adenosine. Inhibited by dipyridamole and dilazep (anticancer chemotherapeutics drugs). [UniProt]
Calculated Mw	50 kDa
PTM	Glycosylated. [UniProt]
Cellular Localization	Basolateral cell membrane; Multi-pass membrane protein. Apical cell membrane; Multi-pass membrane protein. Cell membrane; Multi-pass membrane protein. Note=Predominantly localized in the basolateral membrane in polarized MDCK cells. [UniProt]

Images



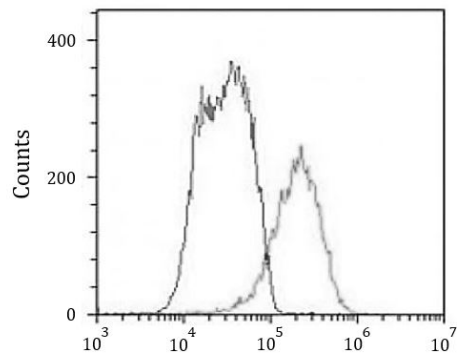
ARG42641 anti-ENT1 antibody IHC-P image

Immunohistochemistry: Paraffin-embedded Human brain tissue stained with ARG42641 anti-ENT1 antibody at 1:500 dilution, for 1 hour at room temperature.



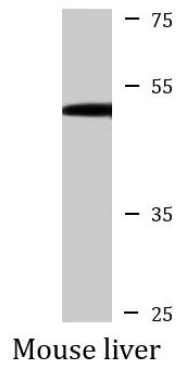
ARG42641 anti-ENT1 antibody WB image

Western blot: 20 µg of Human breast lysate stained with ARG42641 anti-ENT1 antibody at 1:1000 dilution.



ARG42641 anti-ENT1 antibody FACS image

Flow Cytometry: HepG2 cells were fixed with 2% paraformaldehyde 10 min. The cells were then incubated in 2% BSA to block non-specific protein-protein interactions followed by ARG42641 anti-ENT1 antibody (right histogram) at 1:25 dilution, for 60 min at 37°C, followed by incubation with DyLight®488 labelled secondary antibody. Isotype control antibody (left histogram) was Rabbit IgG1 (1 μ g/ 10^6 cells) used under the same conditions. Acquisition of > 10000 events was performed.



ARG42641 anti-ENT1 antibody WB image

Western blot: 20 μ g of Mouse liver lysate stained with ARG42641 anti-ENT1 antibody at 1:1000 dilution.