

ARG42646 anti-LTBR / Lymphotoxin beta Receptor antibody

Package: 50 µg
Store at: -20°C

Summary

Product Description	Rabbit Polyclonal antibody recognizes LTBR / Lymphotoxin beta Receptor
Tested Reactivity	Hu
Tested Application	IHC-P, WB
Host	Rabbit
Clonality	Polyclonal
Isotype	IgG
Target Name	LTBR / Lymphotoxin beta Receptor
Species	Human
Immunogen	Synthetic peptide corresponding to aa. 420-435 of Human LTBR / Lymphotoxin beta Receptor (ATPSNRGPRNQFITHD).
Conjugation	Un-conjugated
Alternate Names	TNF-R-III; LT-BETA-R; Tumor necrosis factor receptor superfamily member 3; TNF-R-III; TNFR-III; TNFR-RP; TNFR3; D12S370; Tumor necrosis factor C receptor; Tumor necrosis factor receptor 2-related protein; TNFCR; Tumor necrosis factor receptor type III; Lymphotoxin-beta receptor; TNFR2-RP; CD18; TNFRSF3

Application Instructions

Application table	Application	Dilution
	IHC-P	1:200 - 1:1000
	WB	1:500 - 1:2000
Application Note	* The dilutions indicate recommended starting dilutions and the optimal dilutions or concentrations should be determined by the scientist.	
Positive Control	HeLa and A549	
Observed Size	~ 58 kDa	

Properties

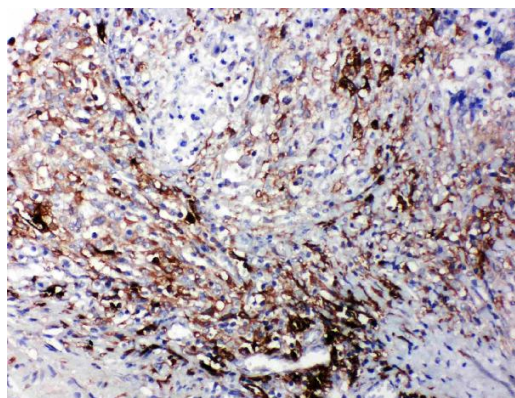
Form	Liquid
Purification	Affinity purification with immunogen.
Buffer	0.2% Na ₂ HPO ₄ , 0.9% NaCl, 0.05% Sodium azide, 0.05% Thimerosal and 5% BSA.
Preservative	0.05% Sodium azide and 0.05% Thimerosal
Stabilizer	5% BSA
Concentration	0.5 mg/ml

Storage instruction	For continuous use, store undiluted antibody at 2-8°C for up to a week. For long-term storage, aliquot and store at -20°C or below. Storage in frost free freezers is not recommended. Avoid repeated freeze/thaw cycles. Suggest spin the vial prior to opening. The antibody solution should be gently mixed before use.
Note	For laboratory research only, not for drug, diagnostic or other use.

Bioinformation

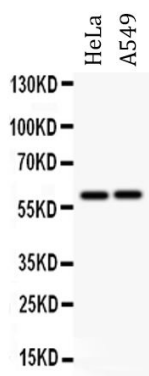
Gene Symbol	LTBR
Gene Full Name	lymphotoxin beta receptor (TNFR superfamily, member 3)
Background	This gene encodes a member of the tumor necrosis factor receptor superfamily. The major ligands of this receptor include lymphotoxin alpha/beta and tumor necrosis factor ligand superfamily member 14. The encoded protein plays a role in signalling during the development of lymphoid and other organs, lipid metabolism, immune response, and programmed cell death. Activity of this receptor has also been linked to carcinogenesis. Alternatively spliced transcript variants encoding multiple isoforms have been observed. [provided by RefSeq, Aug 2012]
Function	Receptor for the heterotrimeric lymphotoxin containing LTA and LTB, and for TNFS14/LIGHT. Promotes apoptosis via TRAF3 and TRAF5. May play a role in the development of lymphoid organs. [UniProt]
Calculated Mw	47 kDa
Cellular Localization	Membrane; Single-pass type I membrane protein. [UniProt]

Images



ARG42646 anti-LTBR / Lymphotoxin beta Receptor antibody IHC-P image

Immunohistochemistry: Paraffin-embedded Human intestinal cancer tissue stained with ARG42646 anti-LTBR / Lymphotoxin beta Receptor antibody.



ARG42646 anti-LTBR / Lymphotoxin beta Receptor antibody WB image

Western blot: 40 µg of HeLa and A549 whole cell lysates stained with ARG42646 anti-LTBR / Lymphotoxin beta Receptor antibody at 0.5 µg/ml dilution.