

ARG42652 anti-MAdCAM1 antibody

Package: 50 µg
Store at: -20°C

Summary

Product Description	Rabbit Polyclonal antibody recognizes MAdCAM1
Tested Reactivity	Hu
Tested Application	IHC-P
Host	Rabbit
Clonality	Polyclonal
Isotype	IgG
Target Name	MAdCAM1
Species	Human
Immunogen	Synthetic peptide corresponding to aa. 173-190 of Human MAdCAM1. (EEPQGDEDVLFVRTERWR)
Conjugation	Un-conjugated
Alternate Names	Mucosal addressin cell adhesion molecule 1; hMAdCAM-1; MAdCAM-1; MACAM1

Application Instructions

Application table	Application	Dilution
	IHC-P	1:200 - 1:1000
Application Note	* The dilutions indicate recommended starting dilutions and the optimal dilutions or concentrations should be determined by the scientist.	

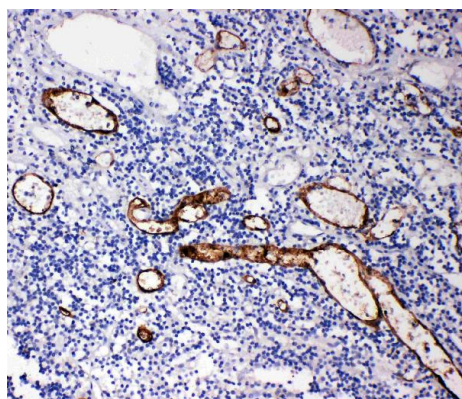
Properties

Form	Liquid
Purification	Affinity purification with immunogen.
Buffer	0.2% Na ₂ HPO ₄ , 0.9% NaCl, 0.05% Sodium azide, 0.05% Thimerosal and 5% BSA.
Preservative	0.05% Sodium azide and 0.05% Thimerosal
Stabilizer	5% BSA
Concentration	0.5 mg/ml
Storage instruction	For continuous use, store undiluted antibody at 2-8°C for up to a week. For long-term storage, aliquot and store at -20°C or below. Storage in frost free freezers is not recommended. Avoid repeated freeze/thaw cycles. Suggest spin the vial prior to opening. The antibody solution should be gently mixed before use.
Note	For laboratory research only, not for drug, diagnostic or other use.

Bioinformation

Gene Symbol	MADCAM1
Gene Full Name	mucosal vascular addressin cell adhesion molecule 1
Background	The protein encoded by this gene is an endothelial cell adhesion molecule that interacts preferentially with the leukocyte beta7 integrin LPAM-1 (alpha4beta7), L-selectin, and VLA-4 (alpha4beta1) on myeloid cells to direct leukocytes into mucosal and inflamed tissues. It is a member of the immunoglobulin family and is similar to ICAM1 and VCAM1. At least seven alternatively spliced transcripts encoding different protein isoforms have been found for this gene, but the full-length nature of some variants has not been determined. [provided by RefSeq, Jul 2008]
Function	Cell adhesion leukocyte receptor expressed by mucosal venules, helps to direct lymphocyte traffic into mucosal tissues including the Peyer patches and the intestinal lamina propria. It can bind both integrin alpha-4/beta-7 and L-selectin, regulating both the passage and retention of leukocytes. Isoform 2, lacking the mucin-like domain, may be specialized in supporting integrin alpha-4/beta-7-dependent adhesion strengthening, independent of L-selectin binding. [UniProt]
Calculated Mw	40 kDa
PTM	The Ser/Thr-rich mucin-like domain may provide possible sites for O-glycosylation. [UniProt]
Cellular Localization	Membrane; Single-pass type I membrane protein. [UniProt]

Images



ARG42652 anti-MAdCAM1 antibody IHC-P image

Immunohistochemistry: Paraffin-embedded Human appendicitis tissue stained with ARG42652 anti-MAdCAM1 antibody.