

ARG42702 anti-EDNRA / Endothelin A receptor antibody

Package: 50 µg
Store at: -20°C

Summary

Product Description	Rabbit Polyclonal antibody recognizes EDNRA / Endothelin A receptor
Tested Reactivity	Hu
Tested Application	FACS, IHC-P, WB
Host	Rabbit
Clonality	Polyclonal
Isotype	IgG
Target Name	EDNRA / Endothelin A receptor
Species	Human
Immunogen	Recombinant protein corresponding to N32-Q381 of Human EDNRA / Endothelin A receptor.
Conjugation	Un-conjugated
Alternate Names	ETA-R; ETAR; Endothelin-1 receptor; ETRA; Endothelin A receptor; MFDA; ET-A; ETA; hET-AR

Application Instructions

Application table	Application	Dilution
	FACS	1:150 - 1:500
	IHC-P	1:200 - 1:1000
	WB	1:500 - 1:2000
Application Note	* The dilutions indicate recommended starting dilutions and the optimal dilutions or concentrations should be determined by the scientist.	
Positive Control	HEK293	
Observed Size	~ 50 kDa	

Properties

Form	Liquid
Purification	Affinity purification with immunogen.
Buffer	0.2% Na ₂ HPO ₄ , 0.9% NaCl, 0.01% Sodium azide and 4% Trehalose.
Preservative	0.01% Sodium azide
Stabilizer	4% Trehalose
Concentration	0.5 mg/ml
Storage instruction	For continuous use, store undiluted antibody at 2-8°C for up to a week. For long-term storage, aliquot and store at -20°C or below. Storage in frost free freezers is not recommended. Avoid repeated freeze/thaw cycles. Suggest spin the vial prior to opening. The antibody solution should be gently mixed

before use.

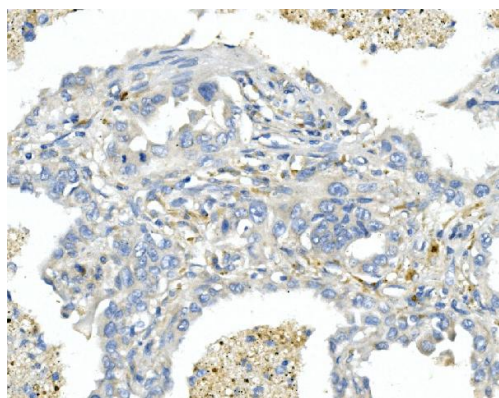
Note

For laboratory research only, not for drug, diagnostic or other use.

Bioinformation

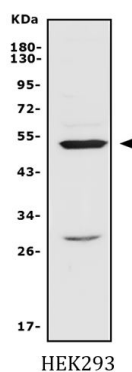
Gene Symbol	EDNRA
Gene Full Name	endothelin receptor type A
Background	This gene encodes the receptor for endothelin-1, a peptide that plays a role in potent and long-lasting vasoconstriction. This receptor associates with guanine-nucleotide-binding (G) proteins, and this coupling activates a phosphatidylinositol-calcium second messenger system. Polymorphisms in this gene have been linked to migraine headache resistance. Alternative splicing results in multiple transcript variants. [provided by RefSeq, Oct 2009]
Function	Receptor for endothelin-1. Mediates its action by association with G proteins that activate a phosphatidylinositol-calcium second messenger system. The rank order of binding affinities for ET-A is: ET1 > ET2 >> ET3. [UniProt]
Calculated Mw	49 kDa
Cellular Localization	Cell membrane; Multi-pass membrane protein. [UniProt]

Images



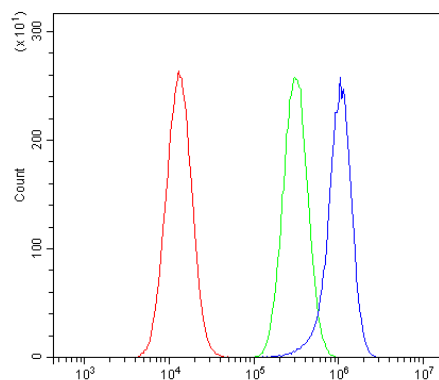
ARG42702 anti-EDNRA / Endothelin A receptor antibody IHC-P image

Immunohistochemistry: Paraffin-embedded Human lung cancer tissue. Antigen Retrieval: Heat mediation was performed in EDTA buffer (pH 8.0). The tissue section was blocked with 10% goat serum. The tissue section was then stained with ARG42702 anti-EDNRA / Endothelin A receptor antibody at 1 µg/ml dilution, overnight at 4°C.



ARG42702 anti-EDNRA / Endothelin A receptor antibody WB image

Western blot: 50 µg of samples under reducing condition. HEK293 whole cell lysate stained with ARG42702 anti-EDNRA / Endothelin A receptor antibody at 0.5 µg/ml dilution, overnight at 4°C.



ARG42702 anti-EDNRA / Endothelin A receptor antibody FACS image

Flow Cytometry: A549 cells were blocked with 10% normal goat serum and then stained with ARG42702 anti-EDNRA / Endothelin A receptor antibody (blue) at $1 \mu\text{g}/10^6$ cells for 30 min at 20°C , followed by incubation with DyLight®488 labelled secondary antibody. Isotype control antibody (green) was rabbit IgG ($1 \mu\text{g}/10^6$ cells) used under the same conditions. Unlabelled sample (red) was also used as a control.