

## ARG42703 anti-BDH1 antibody

Package: 50 µg  
Store at: -20°C

### Summary

Product Description	Rabbit Polyclonal antibody recognizes BDH1
Tested Reactivity	Hu, Rat
Tested Application	FACS, ICC/IF, IHC-P, WB
Host	Rabbit
Clonality	Polyclonal
Isotype	IgG
Target Name	BDH1
Species	Human
Immunogen	Recombinant protein corresponding to M1-Y287 of Human BDH1.
Conjugation	Un-conjugated
Alternate Names	BDH; D-beta-hydroxybutyrate dehydrogenase, mitochondrial; Short chain dehydrogenase/reductase family 9C member 1; SDR9C1; EC 1.1.1.30; 3-hydroxybutyrate dehydrogenase

### Application Instructions

Application table	Application	Dilution
	FACS	1:150 - 1:500
	ICC/IF	1:200 - 1:1000
	IHC-P	1:200 - 1:1000
	WB	1:500 - 1:2000
Application Note	* The dilutions indicate recommended starting dilutions and the optimal dilutions or concentrations should be determined by the scientist.	
Observed Size	~ 32 kDa	

### Properties

Form	Liquid
Purification	Affinity purification with immunogen.
Buffer	0.2% Na <sub>2</sub> HPO <sub>4</sub> , 0.9% NaCl, 0.01% Sodium azide and 4% Trehalose.
Preservative	0.01% Sodium azide
Stabilizer	4% Trehalose
Concentration	0.5 mg/ml
Storage instruction	For continuous use, store undiluted antibody at 2-8°C for up to a week. For long-term storage, aliquot and store at -20°C or below. Storage in frost free freezers is not recommended. Avoid repeated

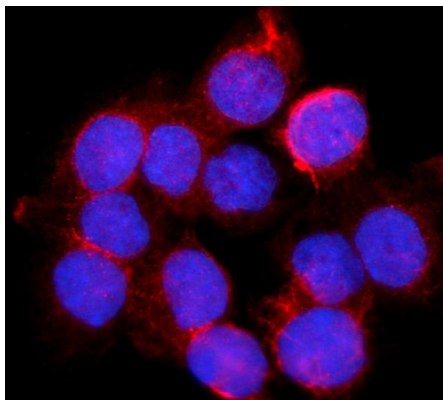
freeze/thaw cycles. Suggest spin the vial prior to opening. The antibody solution should be gently mixed before use.

**Note** For laboratory research only, not for drug, diagnostic or other use.

## Bioinformation

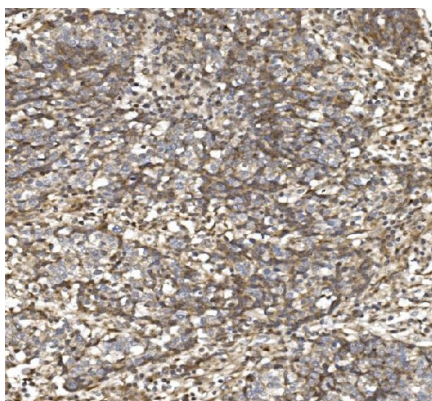
Gene Symbol	BDH1
Gene Full Name	3-hydroxybutyrate dehydrogenase, type 1
Background	This gene encodes a member of the short-chain dehydrogenase/reductase gene family. The encoded protein forms a homotetrameric lipid-requiring enzyme of the mitochondrial membrane and has a specific requirement for phosphatidylcholine for optimal enzymatic activity. The encoded protein catalyzes the interconversion of acetoacetate and (R)-3-hydroxybutyrate, the two major ketone bodies produced during fatty acid catabolism. Alternatively spliced transcript variants encoding the same protein have been described. [provided by RefSeq, Jul 2008]
Calculated Mw	38 kDa
Cellular Localization	Mitochondrion inner membrane. Mitochondrion matrix. [UniProt]

## Images



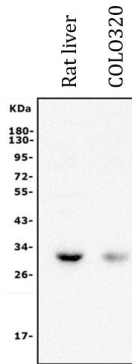
ARG42703 anti-BDH1 antibody ICC/IF image

Immunofluorescence: A431 cells were blocked with 10% goat serum and then stained with ARG42703 anti-BDH1 antibody (red) at 5 µg/ml dilution, overnight at 4°C. DAPI (blue) for nuclear staining.



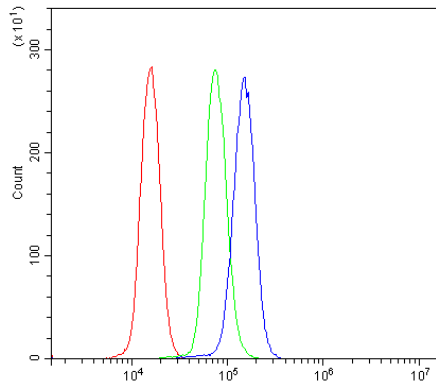
ARG42703 anti-BDH1 antibody IHC-P image

Immunohistochemistry: Paraffin-embedded Human lung cancer tissue. Antigen Retrieval: Heat mediation was performed in EDTA buffer (pH 8.0). The tissue section was blocked with 10% goat serum. The tissue section was then stained with ARG42703 anti-BDH1 antibody at 2 µg/ml dilution, overnight at 4°C.



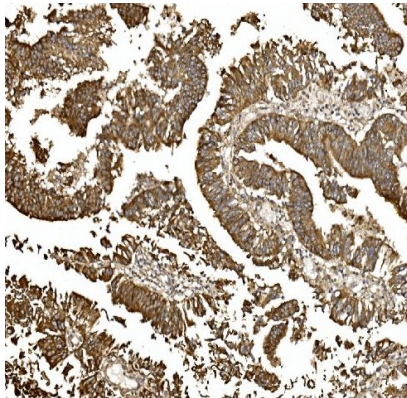
#### ARG42703 anti-BDH1 antibody WB image

Western blot: 50 µg of samples under reducing condition. Rat liver and COLO320 whole cell lysates stained with ARG42703 anti-BDH1 antibody at 0.5 µg/ml dilution, overnight at 4°C.



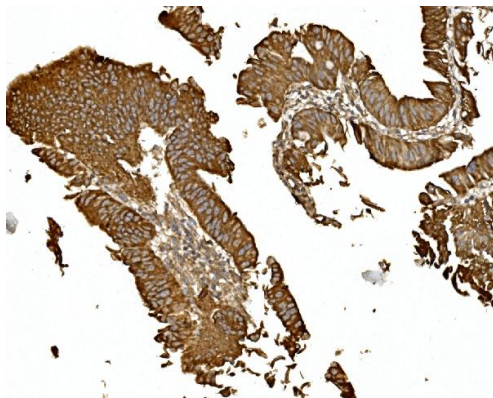
#### ARG42703 anti-BDH1 antibody FACS image

Flow Cytometry: U937 cells were blocked with 10% normal goat serum and then stained with ARG42703 anti-BDH1 antibody (blue) at 1 µg/10<sup>6</sup> cells for 30 min at 20°C, followed by incubation with DyLight®488 labelled secondary antibody. Isotype control antibody (green) was rabbit IgG (1 µg/10<sup>6</sup> cells) used under the same conditions. Unlabelled sample (red) was also used as a control.



#### ARG42703 anti-BDH1 antibody IHC-P image

Immunohistochemistry: Paraffin-embedded Human rectal cancer tissue. Antigen Retrieval: Heat mediation was performed in EDTA buffer (pH 8.0). The tissue section was blocked with 10% goat serum. The tissue section was then stained with ARG42703 anti-BDH1 antibody at 2 µg/ml dilution, overnight at 4°C.



#### ARG42703 anti-BDH1 antibody IHC-P image

Immunohistochemistry: Paraffin-embedded Human rectal cancer tissue. Antigen Retrieval: Heat mediation was performed in EDTA buffer (pH 8.0). The tissue section was blocked with 10% goat serum. The tissue section was then stained with ARG42703 anti-BDH1 antibody at 2 µg/ml dilution, overnight at 4°C.